

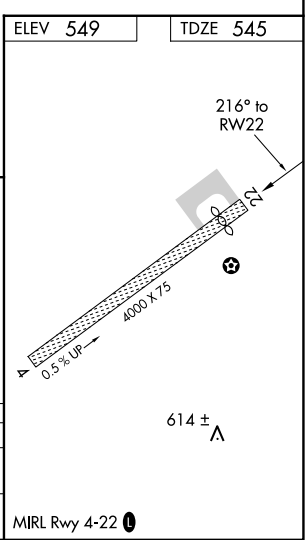
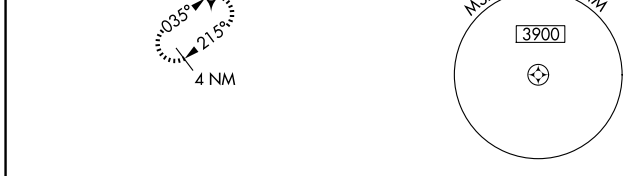
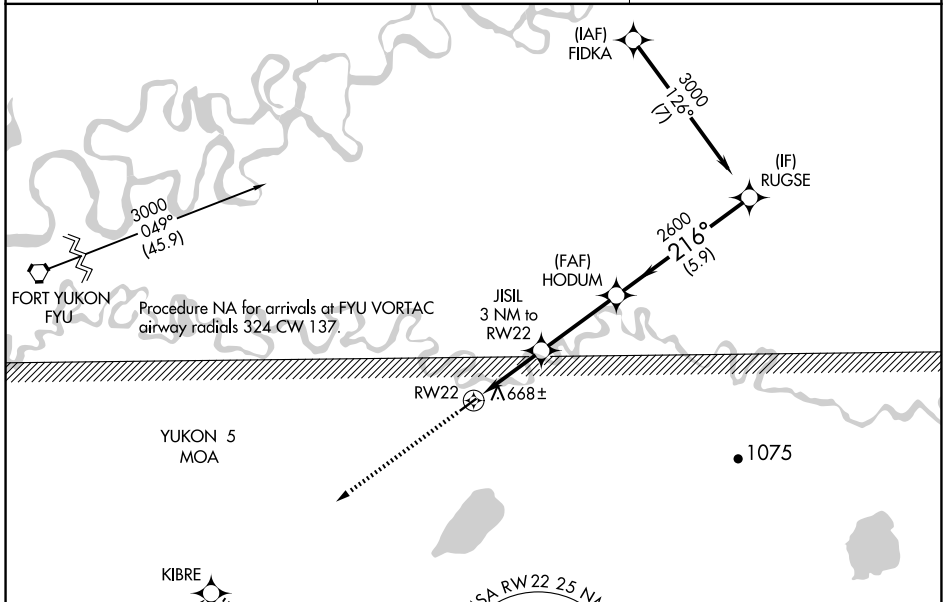
APP CRS 216°	Rwy Idg TDZE Apt Elev	3500 545 549
------------------------	-----------------------------	---

RNAV (GPS) RWY 22

CHALKYITSIK (CIK) (PACI)

RNP APCH.	<p>▼ Procedure NA at night.</p> <p>▲ NA Rwy 22 helicopter visibility reduction below 1 SM NA. Use Fort Yukon altimeter setting.</p>	MISSED APPROACH: Climb to 3000 direct KIBRE and hold.
-----------	---	---

FYU/PFYU AWOS-3P 125.8	ANCHORAGE CENTER 135.0 225.4	CTAF 122.9
----------------------------------	--	----------------------



3000	KIBRE	HODUM	RUGSE
↑	✦		
		JISIL 3 NM to RWY 22	
		≤ 3.00° TCH 40	
		216°	3000
		2600	
		1540	
		RWY 22	
		3 NM	3.3 NM
			5.9 NM

CATEGORY	A	B	C	D
LNVA MDA	1020-1	475 (500-1)	1020-1 ³ / ₈	475 (500-1 ³ / ₈)
CIRCLING	1080-1 531 (600-1)	1160-1 611 (700-1)	1200-1 ³ / ₄ 651 (700-1 ³ / ₄)	1360-2 ³ / ₄ 811 (900-2 ³ / ₄)

AK, 26 DEC 2024 to 20 FEB 2025

AK, 26 DEC 2024 to 20 FEB 2025