

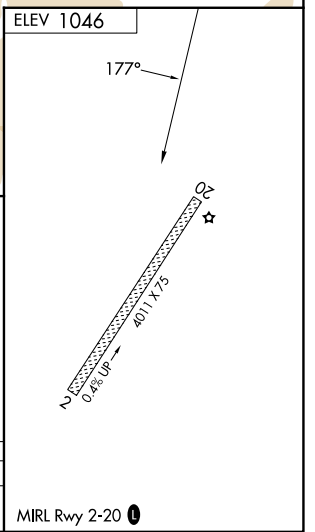
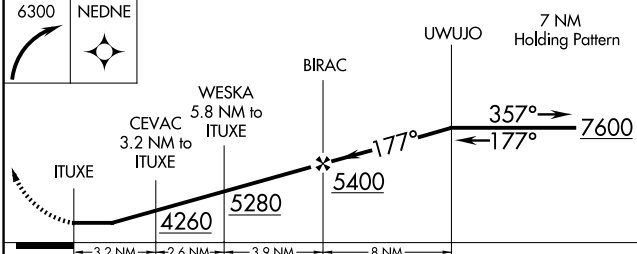
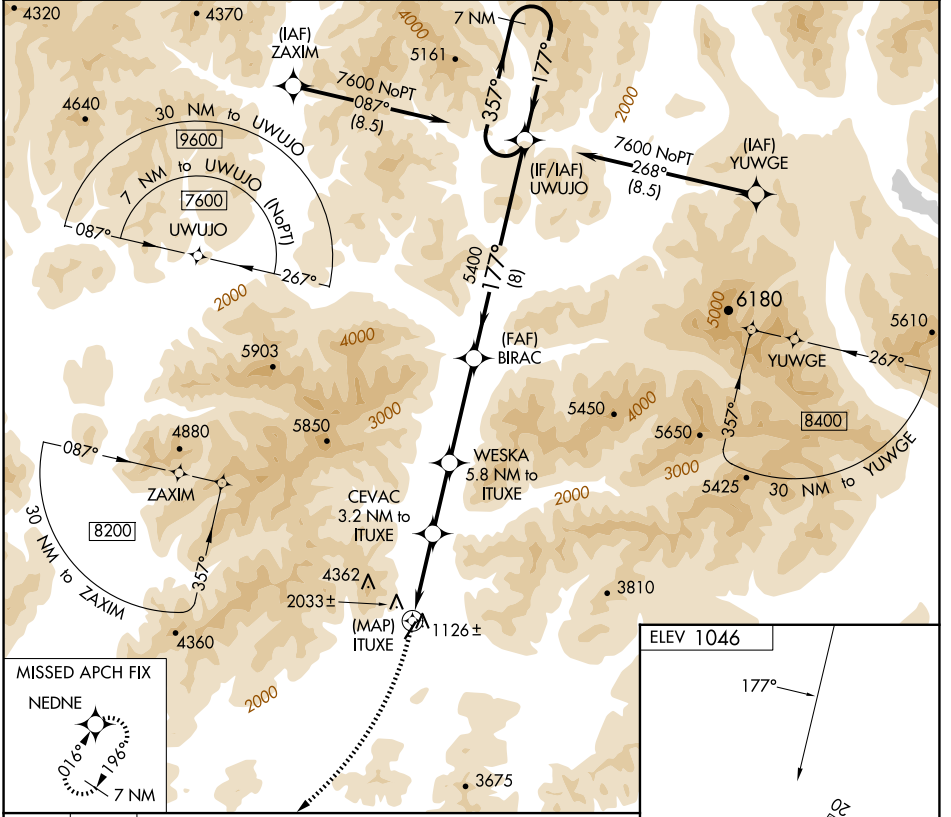
APP CRS 177°	Rwy Idg TDZE Apt Elev 1046	N/A N/A 1046
------------------------	--	---------------------------

RNAV (GPS)-A

COLDFOOT (CXF) (PACX)

RNP APCH - GPS.		MISSED APPROACH: Climbing right turn to 6300 direct NEDNE and hold.
<p>▼ When local altimeter setting not received, use BTT/PABT altimeter setting.</p> <p>▲ NA Rwy 20 helicopter visibility reduction below 1 SM NA. Circling Rwy 20 NA at night. Circling NA for Cats B and C west of Rwy 2-20.</p> <p>☼ -18°C</p>		

AWOS-3P 118.0	BTT/PABT ASOS 135.45	ANCHORAGE CENTER 124.6 352.0	FAIRBANKS RADIO 122.0	UNICOM 122.9
-------------------------	--------------------------------	--	---------------------------------	------------------------



CATEGORY	A	B	C	D
☼ CIRCLING	3460-1¼ 2414 (2500-1¼)	3460-1½ 2414 (2500-1½)	4260-3 3214 (3300-3)	NA

AK, 26 DEC 2024 to 20 FEB 2025

AK, 26 DEC 2024 to 20 FEB 2025