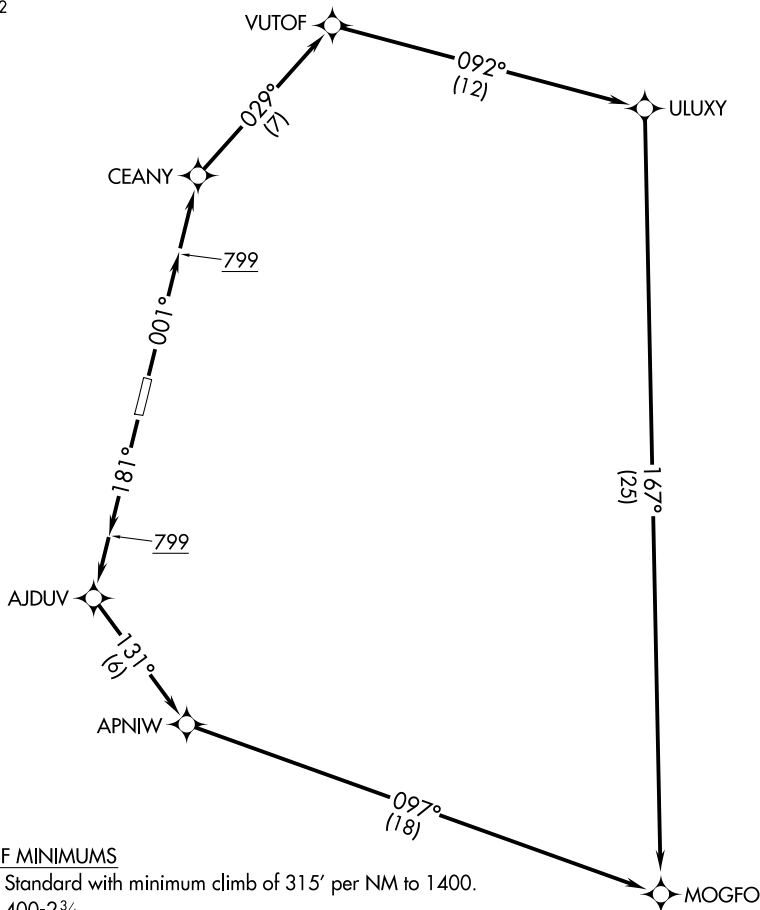


# HUGHES ONE DEPARTURE (OBSTACLE) (RNAV)

ANCHORAGE CENTER  
124.6 352



### TAKEOFF MINIMUMS

Rwy 18: Standard with minimum climb of 315' per NM to 1400.

Rwy 36: 400-2¾.

NOTE: RNAV 1.

NOTE: GPS required.

NOTE: Procedure NA at night.

NOTE: Chart not to scale.

(NOTES CONTINUED ON FOLLOWING PAGE)

### DEPARTURE ROUTE DESCRIPTION

TAKEOFF RUNWAY 18: Climb on heading 181° to 799, then direct AJDUV, then on track 131° to APNIW, then on track 097° to MOGFO, cross MOGFO at or above MEA/MCA for assigned route of flight.

TAKEOFF RUNWAY 36: Climb on heading 001° to 799, then direct CEANY, then on track 029° to VUTOF, then on track 092° to ULUXY, then on track 167° to MOGFO, cross MOGFO at or above MEA/MCA for assigned route of flight.

# HUGHES ONE DEPARTURE (OBSTACLE) (RNAV)

## TAKEOFF OBSTACLE NOTES

- Rwy 18: Tree 5' from DER, 205' right of centerline, 32' AGL/324' MSL.  
 Trees beginning 13' from DER, 150' right of centerline, up to 41' AGL/332' MSL.  
 Trees beginning 36' from DER, 176' left of centerline, up to 59' AGL/350' MSL.  
 Trees beginning 161' from DER, 244' left of centerline, up to 61' AGL/352' MSL.  
 Tree 187' from DER, 471' left of centerline, 61' AGL/354' MSL.  
 Trees beginning 235' from DER, 64' left of centerline, up to 65' AGL/358' MSL.  
 Trees beginning 510' from DER, 187' left of centerline, up to 68' AGL/362' MSL.  
 Tree 1484' from DER, 855' right of centerline, 51' AGL/347' MSL.  
 Tree 1886' from DER, 561' right of centerline, 54' AGL/350' MSL.  
 Tree 2187' from DER, 325' right of centerline, 54' AGL/353' MSL.  
 Trees beginning 2199' from DER, 106' right of centerline, up to 64' AGL/364' MSL..  
 Tree 2510' from DER, 16' left of centerline, 72' AGL/365' MSL.  
 Trees beginning 2524' from DER, 52' right of centerline, up to 68' AGL/370' MSL.  
 Trees beginning 2626' from DER, 168' right of centerline, up to 76' AGL/377' MSL.  
 Tree 2664' from DER, 7' left of centerline, 81' AGL/375' MSL.  
 Trees beginning 2666' from DER, 225' right of centerline, up to 78' AGL/379' MSL.
- Rwy 36: Trees, vehicles on road beginning 1' from DER, 345' right of centerline, up to 28' AGL/322' MSL.  
 Vegetation 42' from DER, 123' left of centerline, 5' AGL/301' MSL.  
 Trees beginning 76' from DER, 90' left of centerline, up to 35' AGL/318' MSL.  
 Trees, vehicles on road beginning 77' from DER, 86' right of centerline, up to 31' AGL/328' MSL.  
 Poles, trees, catenary, vehicles on road, antenna, buildings, vertical structures beginning 105' from DER, 117' right of centerline, up to 34' AGL/331' MSL.  
 Trees beginning 138' from DER, 142' left of centerline, up to 44' AGL/337' MSL.  
 Trees beginning 294' from DER, 132' left of centerline, up to 46' AGL/340' MSL.  
 Tree, vehicles on road beginning 360' from DER, 482' right of centerline, up to 47' AGL/344' MSL.  
 Trees beginning 415' from DER, 528' right of centerline, up to 49' AGL/346' MSL.  
 Trees, vehicles on road, buildings, vertical structures, poles, lighting, tower, catenary, antenna beginning 448' from DER, 198' right of centerline, up to 51' AGL/348' MSL.  
 Trees, poles, catenary beginning 1012' from DER, 277' right of centerline, up to 48' AGL/403' MSL.  
 Trees beginning 1203' from DER, 568' right of centerline, up to 63' AGL/511' MSL.  
 Trees beginning 1415' from DER, 275' right of centerline, up to 52' AGL/553' MSL.  
 Tree 1573' from DER, 760' right of centerline, 54' AGL/587' MSL.  
 Trees beginning 1599' from DER, 394' right of centerline, up to 50' AGL/595' MSL.  
 Trees beginning 1780' from DER, 314' right of centerline, up to 52' AGL/607' MSL.  
 Trees beginning 1823' from DER, 316' right of centerline, up to 53' AGL/611' MSL.  
 Trees beginning 2200' from DER, 356' right of centerline, up to 54' AGL/630' MSL.  
 Tree 2.1 NM from DER, 3729' right of centerline, 18' AGL/627' MSL.

AK, 26 DEC 2024 to 20 FEB 2025

AK, 26 DEC 2024 to 20 FEB 2025