

WAAS CH <b>81845</b> <b>W18A</b>	APP CRS <b>181°</b>	Rwy Idg TDZE Apt Elev	<b>3381</b> <b>299</b> <b>299</b>
--	------------------------	-----------------------------	---

# RNAV (GPS) RWY 18

HUGHES (HUS) (PAHU)

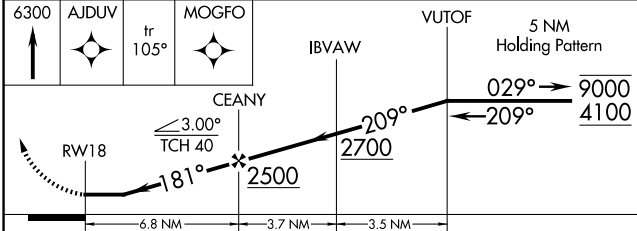
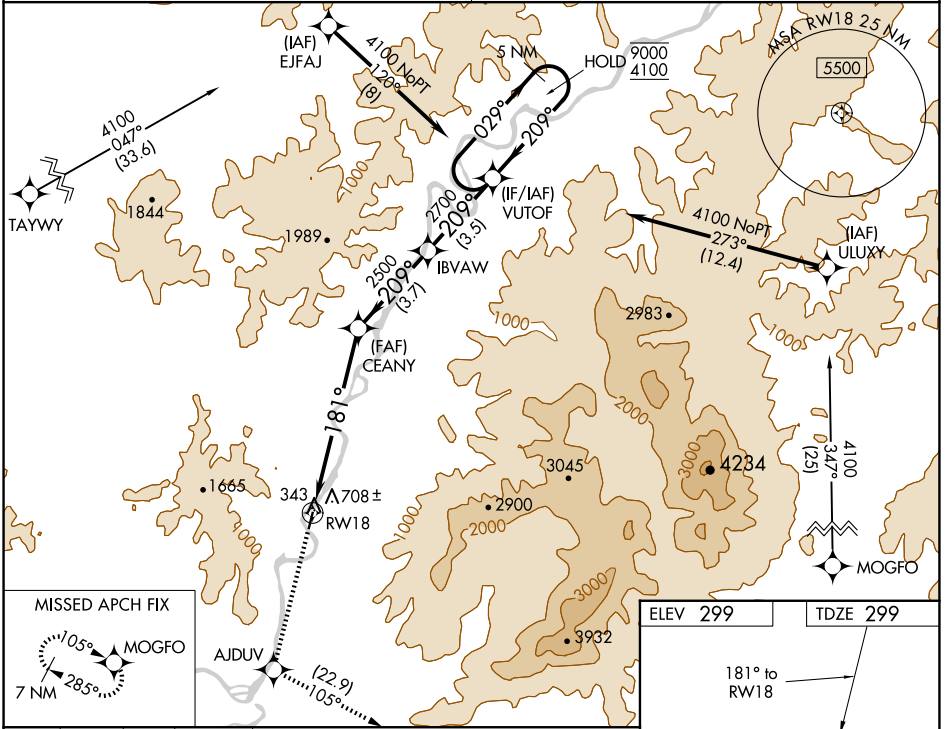
RNP APCH-GPS.

**▼** Procedure NA at night. Circling NA west of Rwy 18-36.  
**▲ NA** Rwy 18 helicopter visibility reduction below 1 SM NA.  
 Use Indian Mountain LRRS altimeter setting. When Indian Mountain LRRS altimeter setting not received, procedure NA.

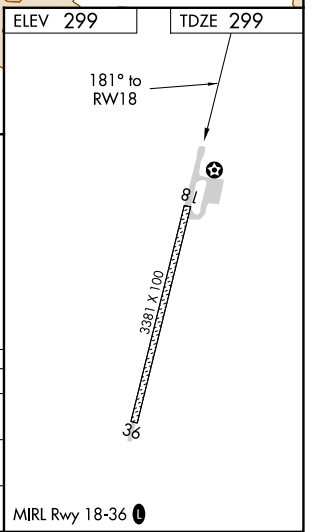
MISSED APPROACH: Climb to 6300 direct AJDUV and on track 105° to MOGFO and hold, continue climb-in-hold to 6300.

ANCHORAGE CENTER  
**124.6 352**

CTAF  
**122.9**



CATEGORY	A	B	C	D
LP MDA	1120-1 821 (900-1)	1120-1¼ 821 (900-1¼)	1120-2½ 821 (900-2½)	NA
LNAV MDA	1180-1¼ 881 (900-1¼)	1180-2½ 881 (900-2½)	1180-2½ 881 (900-2½)	NA
<b>C</b> CIRCLING	1260-1¼ 961 (1000-1¼)	1360-1½ 1061 (1100-1½)	1580-3 1281 (1300-3)	NA



AK, 26 DEC 2024 to 20 FEB 2025

AK, 26 DEC 2024 to 20 FEB 2025