

WAAS CH <b>86744</b> <b>W36A</b>	APP CRS <b>001°</b>	Rwy Idg <b>3381</b> TDZE <b>299</b> Apt Elev <b>299</b>
--	------------------------	---

# RNAV (GPS) RWY 36

HUGHES (HUS) (PAHU)

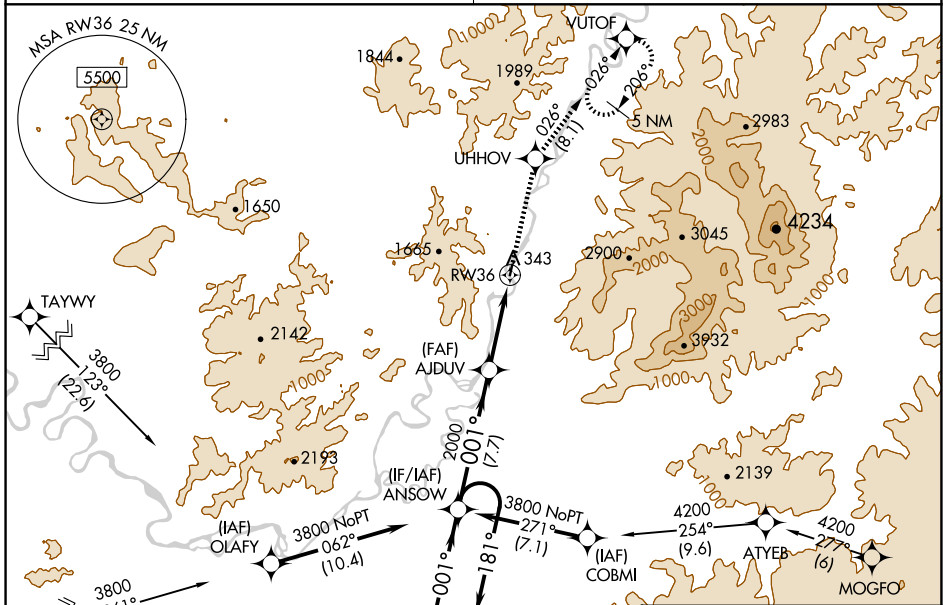
RNP APCH-GPS.

**NA** Rwy 36 helicopter visibility reduction below 1 SM NA. Procedure NA at night. Circling NA west of Rwy 18-36. Use Indian Mountain LRRS altimeter setting. When Indian Mountain LRRS altimeter setting not received, procedure NA.

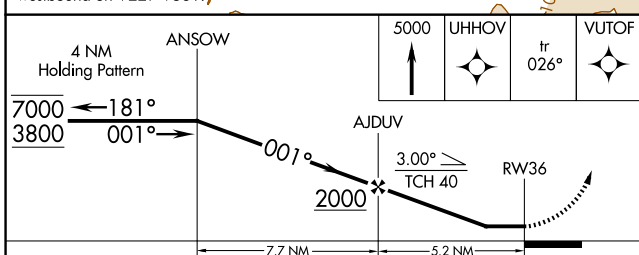
MISSED APPROACH: Climb to 5000 direct UHHOV and on track 026° to VUTOF and hold, continue climb-in-hold to 5000.

ANCHORAGE CENTER  
**124.6 352**

CTAF  
**122.9**

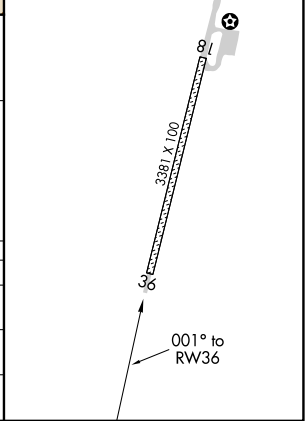


Procedure NA for arrivals at TOYKU westbound on V229-V531.



ELEV 299	TDZE 299
MIRA RWY 18-36	

CATEGORY	A	B	C	D
LNAV MDA	1440-1½ 1141 (1200-1½)	1440-1½ 1141 (1200-1½)	1440-3 1141 (1200-3)	NA
LP MDA	1440-1½ 1141 (1200-1½)	1440-1½ 1141 (1200-1½)	1440-3 1141 (1200-3)	NA
<b>C</b> CIRCLING	1440-1½ 1141 (1200-1½)	1440-1½ 1141 (1200-1½)	1580-3 1281 (1300-3)	NA



AK, 26 DEC 2024 to 20 FEB 2025

AK, 26 DEC 2024 to 20 FEB 2025