

APP CRS	Rwy Idg	<b>3986</b>
<b>018°</b>	TDZE	<b>181</b>
	Apt Elev	<b>181</b>

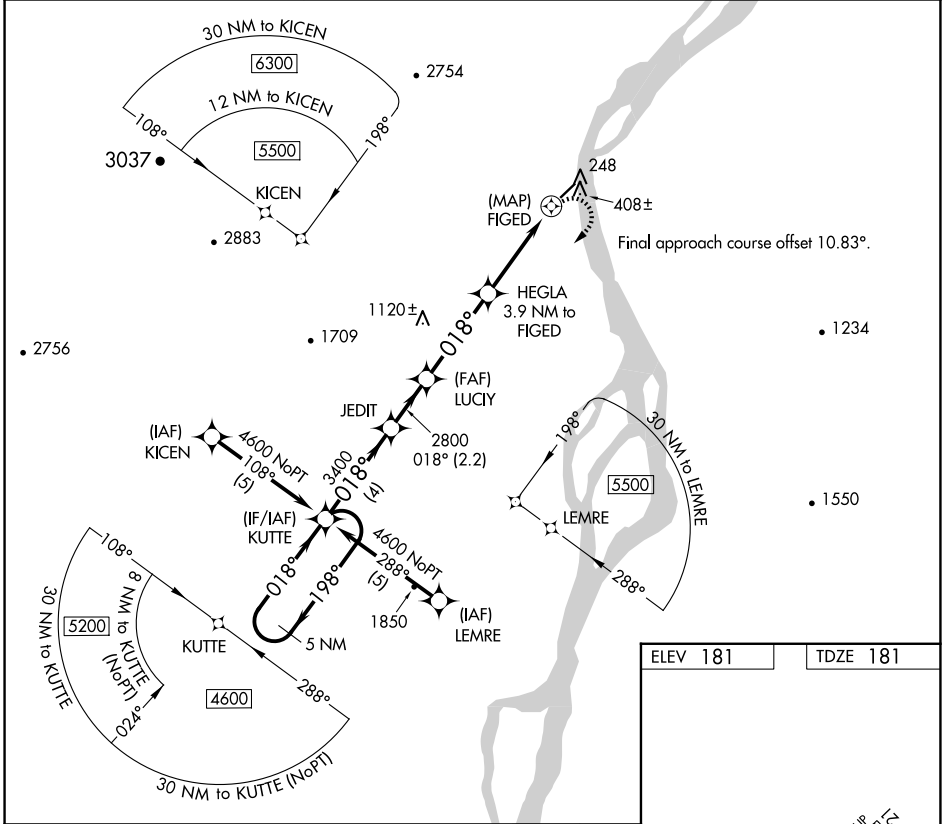
# RNAV (GPS) RWY 3

KALTAG (KAL)(PAKV)

DME/DME RNP-0.3 NA.  
 Helicopter visibility reduction below 1 SM NA.  
 Night Landing: Rwy 3 NA.

MISSED APPROACH: Climbing right turn to 4600 direct KUTTE and hold.

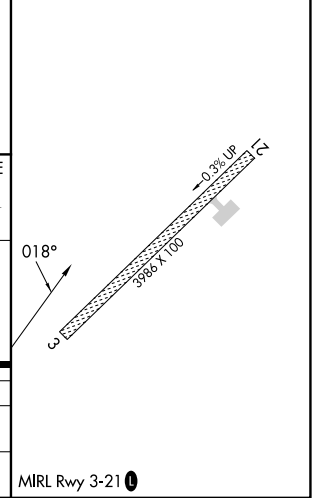
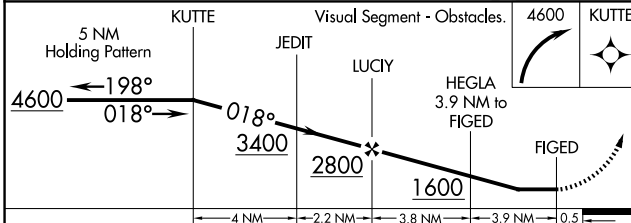
AWOS-3 <b>135.25</b>	ANCHORAGE CENTER <b>127.0 290.2</b>	CTAF <b>122.9</b>
-------------------------	--	----------------------



AK, 26 DEC 2024 to 20 FEB 2025

AK, 26 DEC 2024 to 20 FEB 2025

ELEV 181	TDZE 181
----------	----------



CATEGORY	A	B	C	D
RNAV MDA	1280-1¼ 1099 (1100-1¼)	1280-1½ 1099 (1100-1½)	1280-3 1099 (1100-3)	NA
CIRCLING	1280-1¼ 1099 (1100-1¼)	1280-1½ 1099 (1100-1½)	1280-3 1099 (1100-3)	NA