

APP CRS	Rwy Idg	3300
247°	TDZE	115
	Apt Elev	115

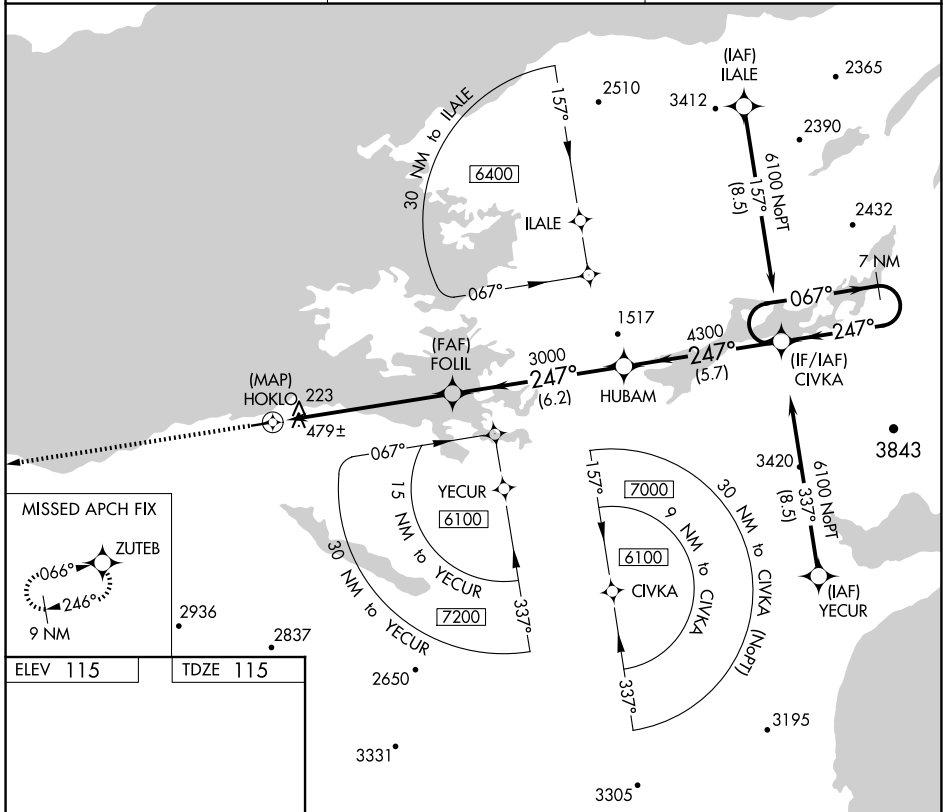
RNAV (GPS) RWY 25

KOKHANOK (9K2) (PFKK)

NA Rwy 25 helicopter visibility reduction below 1 SM NA.
DME/DME RNP-0.3 NA. Use Iliamna altimeter setting.
Procedure NA at night.

MISSED APPROACH: Climb to 4400 direct ZUTEB and hold, continue climb-in-hold to 4400.

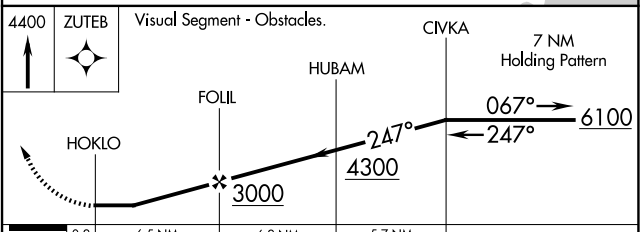
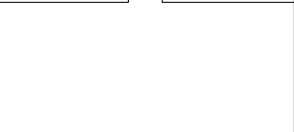
III/PAIL ASOS 134.95	ANCHORAGE CENTER 118.8	CTAF 122.9
--------------------------------	----------------------------------	----------------------



MISSED APCH FIX



ELEV 115	TDZE 115
----------	----------



CATEGORY	A	B	C	D
LNAV MDA	880-1 765 (800-1)	880-1¼ 765 (800-1¼)		NA
CIRCLING	1040-1¼ 925 (1000-1¼)	1100-1½ 985 (1000-1½)		NA

REIL Rws 7 and 25
MIRL Rwy 7-25

AK, 26 DEC 2024 to 20 FEB 2025

AK, 26 DEC 2024 to 20 FEB 2025