

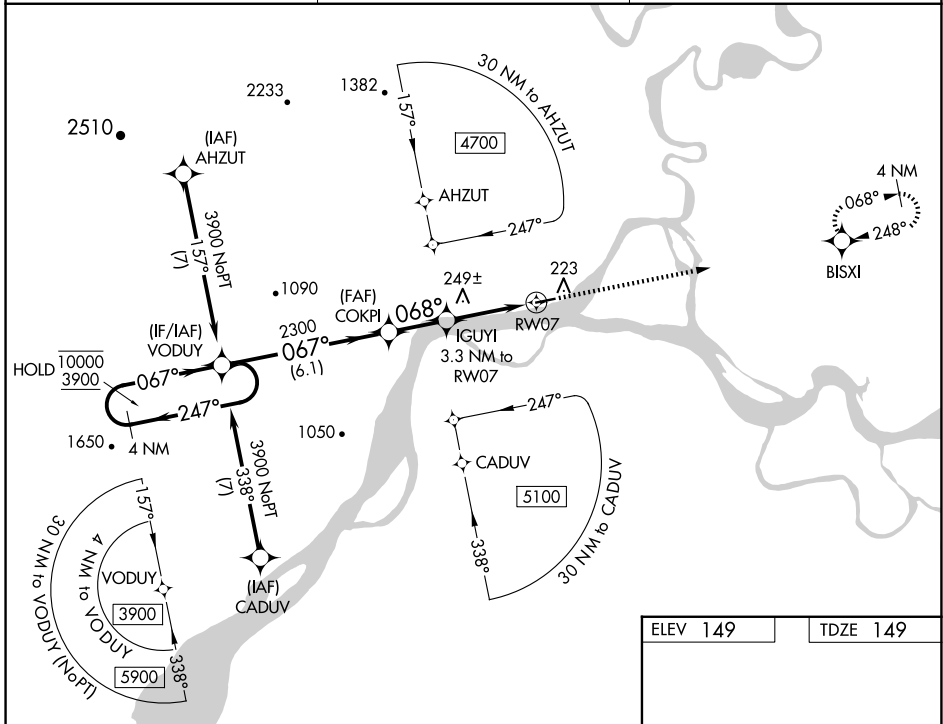
WAAS CH <b>42714</b> <b>W07A</b>	APP CRS <b>068°</b>	Rwy Idg TDZE Apt Elev	<b>4000</b> <b>149</b> <b>149</b>
--	------------------------	-----------------------------	---

# RNAV (GPS) RWY 7

KOYUKUK (KYU) (PFKU)

RNP APCH-GPS.	<p><b>▼</b> Circling Rwy 25 NA at night. Rwy 7 helicopter visibility reduction below 3/4 SM NA. Use Galena altimeter setting; when not received, procedure NA.</p> <p><b>▲</b> NA</p> <p><b>❄</b> -48°C</p>	<p>MISSED APPROACH: Climb to 3700 direct BISXI and hold, continue climb-in-hold to 3700.</p>

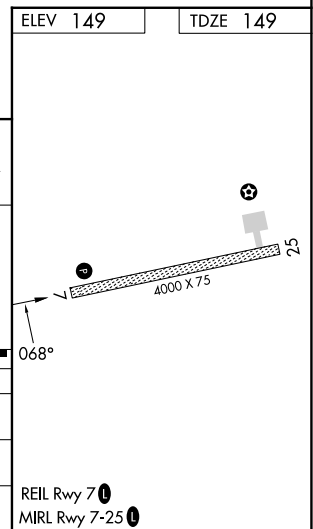
GAL/PAGA AWOS-3P <b>132.525</b>	ANCHORAGE CENTER <b>127.0 290.2</b>	CTAF <b>122.9 0</b>
------------------------------------	--	------------------------



VGSI and RNAV glidepath not coincident (VGSI Angle 4.00/TCH 29).

4 NM Holding Pattern	VODUY	COKPI	IGUYI	BISXI
10000 ← 247°	3900 → 067°	2300	3.3 NM to RW07	3700
GP 3.67°	067°	2300	068°	068°
TCH 55			1460	
	6.1 NM	2.1 NM	3.3 NM	

CATEGORY	A	B	C	D
LPV DA	520-1 371 (400-1)			NA
LNAV MDA	720-1 571 (600-1)	720-1 5/8 571 (600-1 5/8)		NA
CIRCLING	720-1 571 (600-1)	900-1 751 (800-1)	1320-3 1171 (1200-3)	NA



AK, 26 DEC 2024 to 20 FEB 2025

AK, 26 DEC 2024 to 20 FEB 2025