

| | | |
|--|------------------------|------------------------|
| WAAS CH 77807 W21A | APP CRS 211° | Rwy Idg 4000 |
| | | TDZE 658 |
| | | Apt Elev 658 |

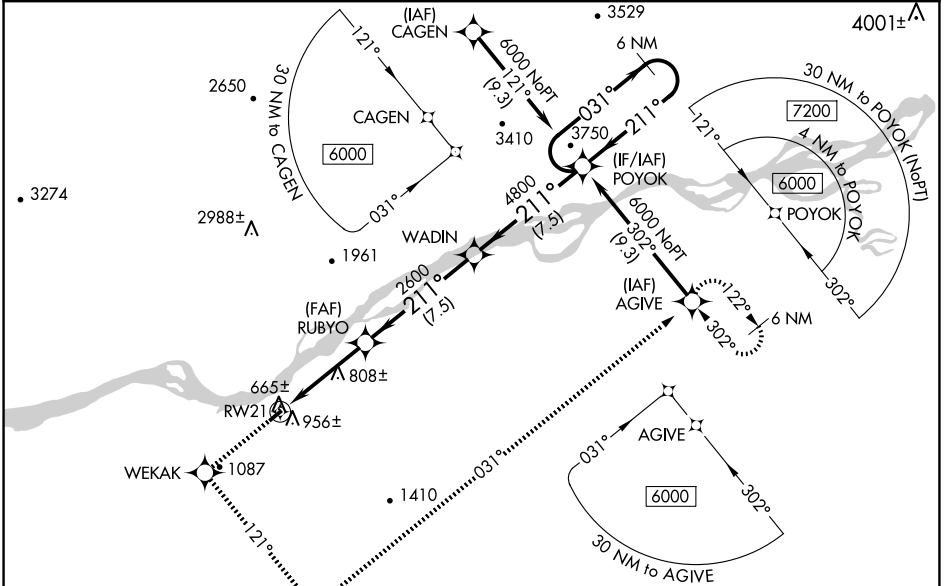
RNAV (GPS) RWY 21

RUBY (RBY) (PARY)

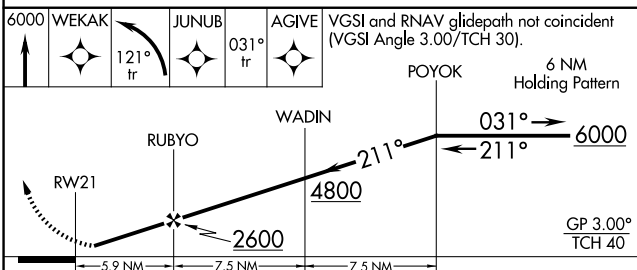
⚠ Baro-VNAV NA when using Galena altimeter setting. For uncompensated Baro-VNAV systems, LNAV/VNAV NA below -16°C (4°F) or above 54°C (130°F). DME/DME RNP-0.3 NA. Visibility reduction by helicopters NA. When local altimeter setting not received, use Galena altimeter setting and increase all DA/MDA 340 feet and all visibilities 1 SM.

MISSED APPROACH: Climb to 6000 direct WEKAK and left turn via 121° track to JUNUB and via 031° track to AGIVE and hold.

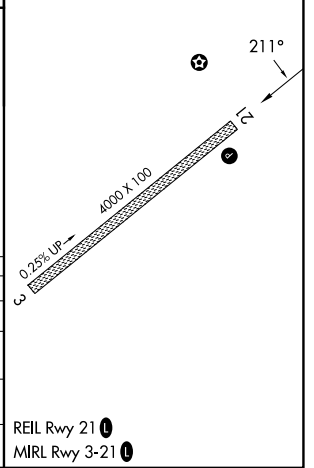
| | | | |
|--------------------------|--|----------------------------------|----------------------|
| AWOS-3P 118.25 | ANCHORAGE CENTER 127.0 290.2 | FAIRBANKS RADIO 122.25 | CTAF 122.8 |
|--------------------------|--|----------------------------------|----------------------|



| | |
|----------|----------|
| ELEV 658 | TDZE 658 |
|----------|----------|



| CATEGORY | A | B | C | D |
|--------------|-----------------------|-----------------------|-------------------------|----|
| LPV DA | 919-1 | 261 (300-1) | | NA |
| LNAV/VNAV DA | 1199-2 | 541 (600-2) | | NA |
| LNAV MDA | 1220-1 | 562 (600-1) | 1220-1½ 562 (600-1½) | NA |
| CIRCLING | 1260-1 602 (700-1) | 1400-1 742 (800-1) | 1400-2¼ 742 (800-2¼) | NA |



AK, 26 DEC 2024 to 20 FEB 2025

AK, 26 DEC 2024 to 20 FEB 2025