

APP CRS	Rwy Idg	<b>3281</b>
<b>137°</b>	TDZE	<b>371</b>
	Apt Elev	<b>371</b>

# RNAV (GPS) RWY 14

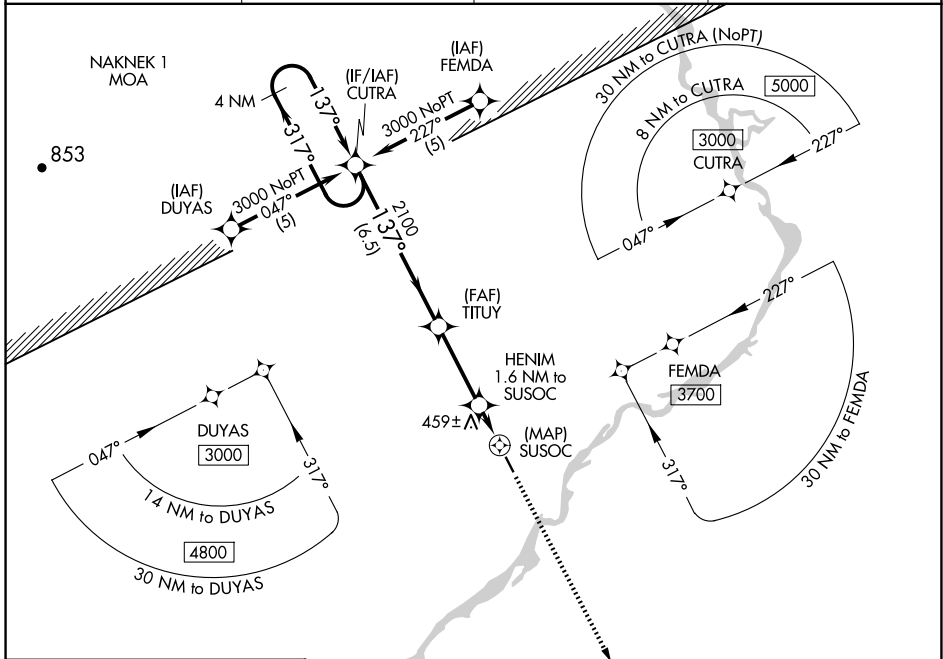
NEW STUYAHOK (KNW) (PANW)

RNP APCH - GPS.

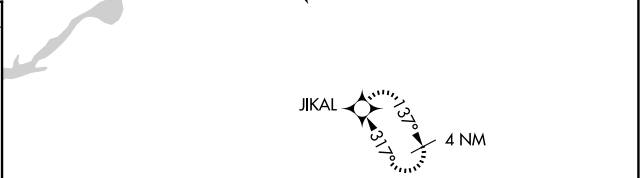
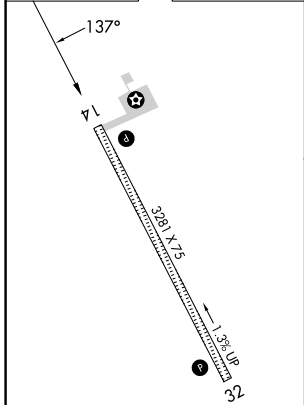
When local altimeter setting not received, use JZZ/PAJZ altimeter setting and increase all MDAs 60 feet. Procedure NA at night. Visibility reduction by helicopters NA.

MISSED APPROACH: Climb to 3000 direct JIKAL and hold.

AWOS-3P <b>120.275</b>	ANCHORAGE CENTER <b>132.75 282.35</b>	DILLINGHAM RADIO <b>122.55</b>	CTAF <b>122.9</b>
---------------------------	--	-----------------------------------	----------------------



ELEV 371	TDZE 371
----------	----------



4 NM Holding Pattern	CUTRA	VGSI and descent angles not coincident (VGSI Angle 3.00/TCH 25).	3000	JIKAL
3000	← 317°	→ 137°	↑	✧
		137°		
		3.05°		
		TCH 35		
		2100		
		1060		
		6.5 NM		
		3.2 NM		
		1.6 NM		
		0.5		

CATEGORY	A	B	C	D
LNAV MDA	780-1	409 (500-1)		NA
CIRCLING	780-1	840-1		NA
	409 (500-1)	469 (500-1)		

AK, 26 DEC 2024 to 20 FEB 2025

AK, 26 DEC 2024 to 20 FEB 2025