

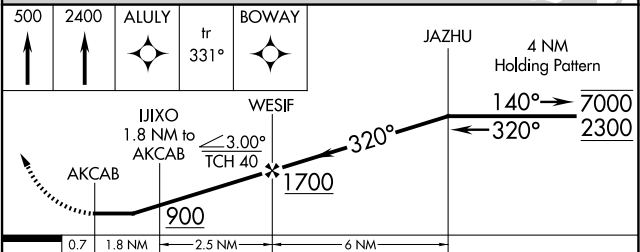
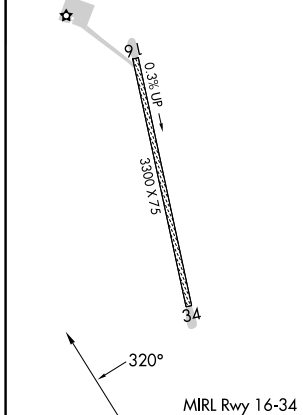
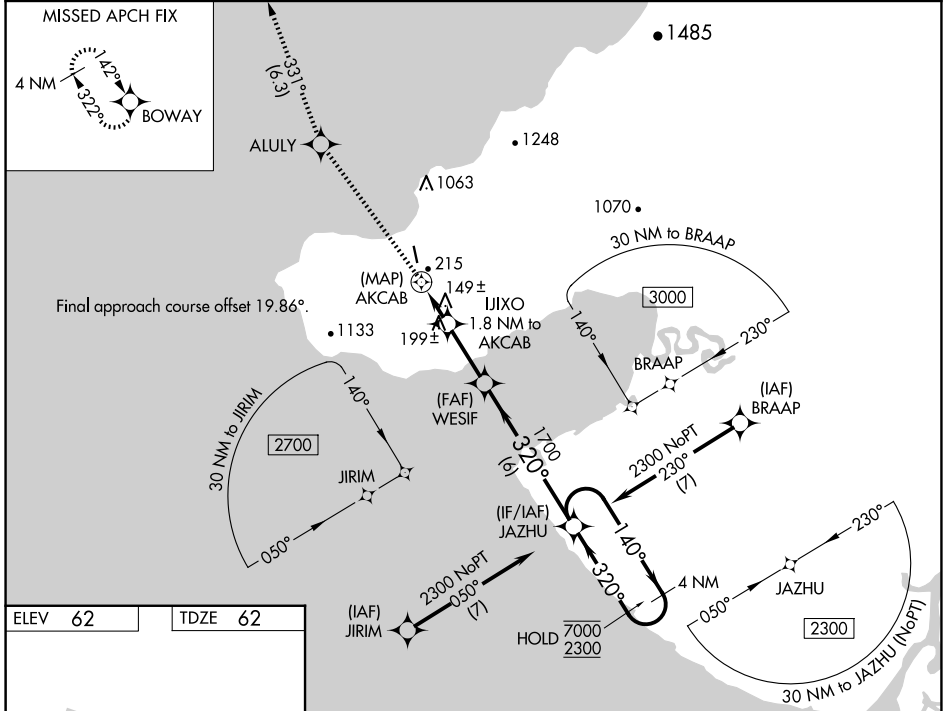
WAAS CH <b>86845</b> <b>W34A</b>	APP CRS <b>320°</b>	Rwy Idg TDZE Apt Elev	<b>3300</b> <b>62</b> <b>62</b>
--	------------------------	-----------------------------	---------------------------------------

# RNAV (GPS) RWY 34

TUNUNAK (4KA) (POKA)

RNP APCH - GPS.	MISSED APPROACH: Climb to 500, then climb to 2400 direct ALULY then on track 331° to BOWAY and hold.
<p>⚠ Circling NA east of Rwy 16-34. Rwy 34 helicopter visibility reduction below 3/4 SM NA. When local altimeter setting not received, use Toksook Bay altimeter setting and increase all MDAs 20 feet and LNAV visibility Cat C 1/8 SM.</p>	

AWOS-3P <b>118.25</b>	ANCHORAGE CENTER <b>125.2 372.0</b>	CTAF <b>122.9</b>
--------------------------	--	----------------------



CATEGORY	A	B	C	D
LP MDA	400-1 338 (400-1)			NA
LNAV MDA	480-1	418 (500-1)	480-1 1/8 418 (500-1 1/8)	NA
CIRCLING	480-1 418 (500-1)	600-1 538 (600-1)	1120-3 1058 (1100-3)	NA

AK, 26 DEC 2024 to 20 FEB 2025

AK, 26 DEC 2024 to 20 FEB 2025