

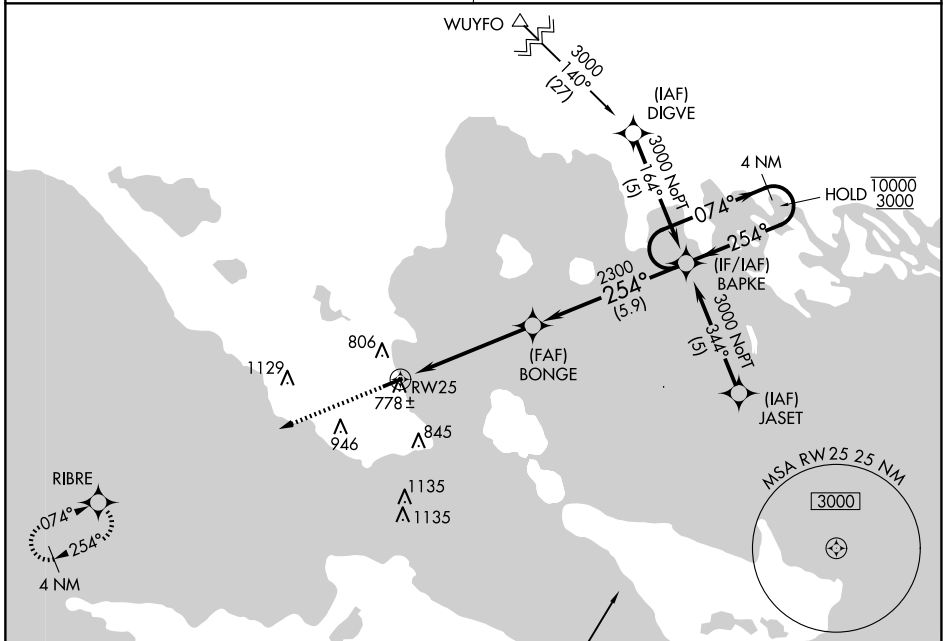
APP CRS	Rwy Idg	3800
254°	TDZE	623
	Apt Elev	624

RNAV (GPS) RWY 25

MACKINAC COUNTY (83D)

RNP APCH.	<p>⚠ Circling Rwy 7 NA at night.</p> <p>⚠ NA Circling NA at night south of Rwy 7-25.</p> <p>Rwy 25 helicopter visibility reduction below ¾ SM NA.</p>	MISSED APPROACH: Climb to 3000 direct RIBRE and hold.
-----------	---	---

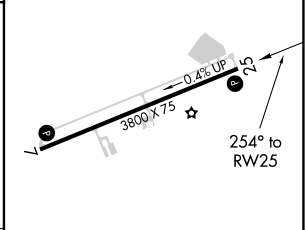
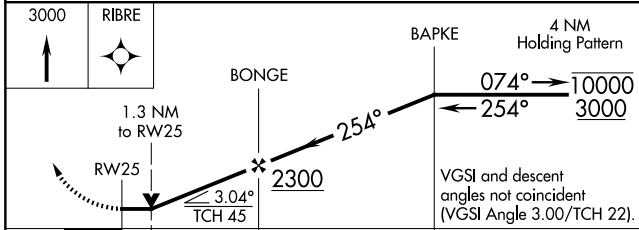
MINNEAPOLIS CENTER	UNICOM
134.6 354.05	122.7 (CTAF) 0



Procedure NA for arrival on PLN VORTAC airway radial 023.

PELLSTON PLN

ELEV	624	TDZE	623
------	-----	------	-----



CATEGORY	A	B	C	D
RNAV MDA	1040-1	417 (500-1)	1040-1½ 417 (500-1½)	NA
CIRCLING	1260-1	636 (700-1)	1300-2 676 (700-2)	NA

MIRL Rwy 7-25 0

REIL Rwys 7 and 25 0

EC-1, 23 JAN 2025 to 20 FEB 2025

EC-1, 23 JAN 2025 to 20 FEB 2025