

APP CRS	Rwy Idg	<b>3800</b>
<b>074°</b>	TDZE	<b>624</b>
	Apt Elev	<b>624</b>

# RNAV (GPS) RWY 7

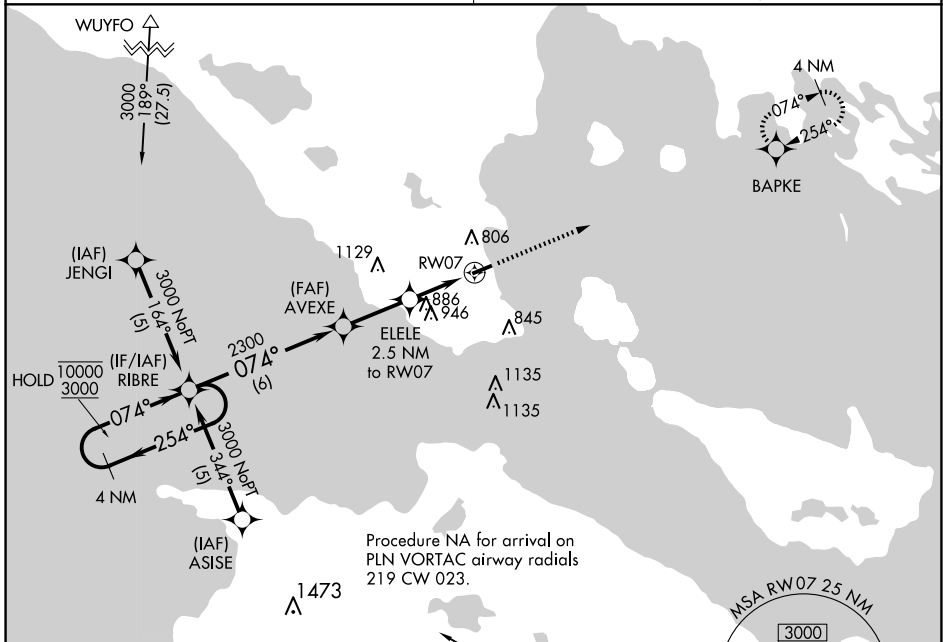
MACKINAC COUNTY (83D)

RNP APCH.  
 ▼ Straight-in Rwy 07 NA at night, Circling Rwy 07 NA at night.  
 ▲ NA Rwy 07 helicopter visibility reduction below 1 SM NA.  
 Circling NA at night south of Rwy 07-25.

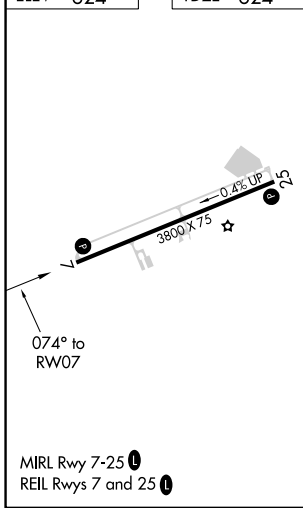
MISSED APPROACH: Climb to 3000 direct BAPKE and hold.

MINNEAPOLIS CENTER  
**134.6 354.05**

UNICOM  
**122.7 (CTAF) 0**



ELEV	624	TDZE	624
------	-----	------	-----



	4 NM Holding Pattern	RIBRE	Visual Segment - Obstacles.	3000	BAPKE
	10000 3000	← 254°	→ 074°	→ 074°	
		AVEXE	ELELE	2.5 NM to RW07	RW07
		2300	1460		
		6 NM	2.6 NM	2.5 NM	
CATEGORY	A	B	C	D	
LNAV MDA	1200-1	576 (600-1)	1200-1½ 576 (600-1½)	NA	
CIRCLING	1260-1	636 (700-1)	1300-2 676 (700-2)	NA	

EC-1, 23 JAN 2025 to 20 FEB 2025

EC-1, 23 JAN 2025 to 20 FEB 2025