

WAAS CH <b>40242</b> <b>W07A</b>	APP CRS <b>071°</b>	Rwy ldg TDZE <b>1203</b> Apt Elev <b>1206</b>
--	------------------------	---

# RNAV (GPS) RWY 7

CARROLL COUNTY (4M1)

RNP APCH-GPS.

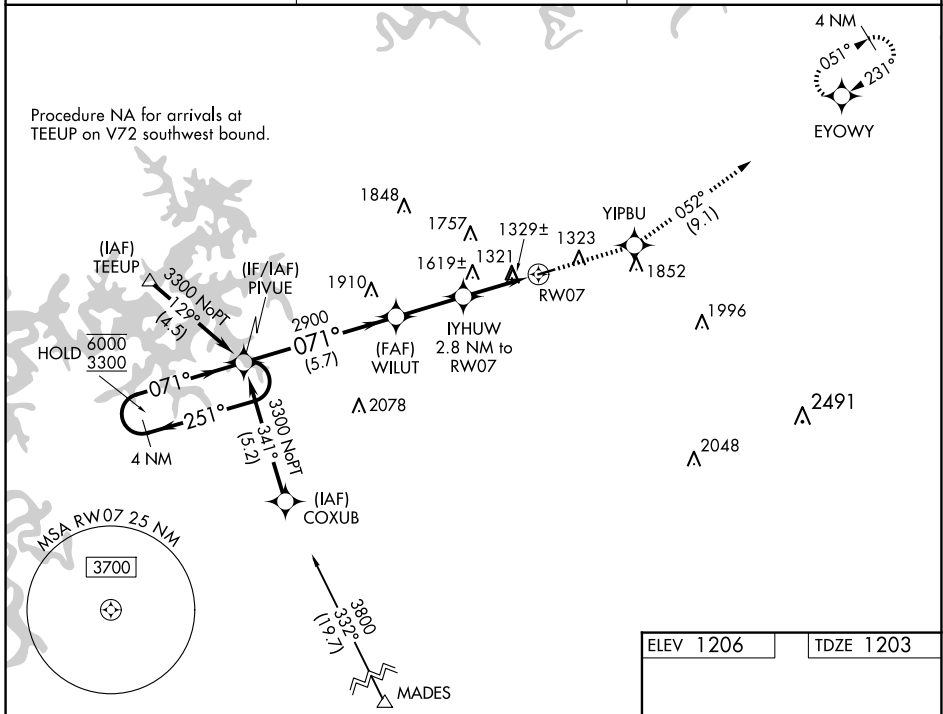
▼ Rwy 7 helicopter visibility reduction below 1 SM NA. Use Branson altimeter setting; when not received, use Rogers altimeter setting and increase all MDA 20 feet. Rwy 7 Straight-in and Circling minimums NA at night.

MISSED APPROACH: Climb to 3300 direct YIPBU and on track 052° to EYOWY and hold.

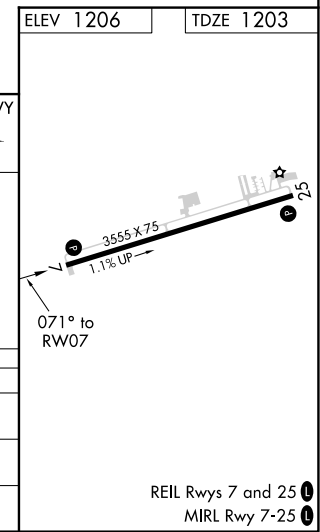
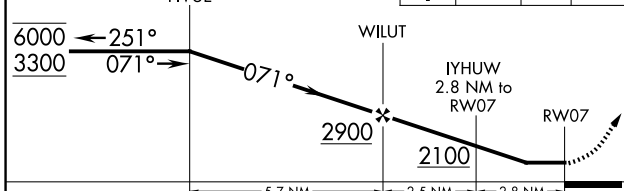
BGG AWOS-3  
**124.625**

RAZORBACK APPROACH ★  
**126.6 305.2**

CTAF  
**122.9**



Visual Segment - Obstacles. 3300 YIPBU tr 052° EYOWY



CATEGORY	A	B	C	D
LP MDA	1760-1	557 (600-1)		NA
LNAV MDA	1940-1	737 (800-1)		NA
<b>C</b> CIRCLING	1940-1 734 (800-1)	1980-1 774 (800-1)		NA

SC-1, 23 JAN 2025 to 20 FEB 2025

SC-1, 23 JAN 2025 to 20 FEB 2025