

WAAS CH 69238 W23A	APP CRS 231°	Rwy Idg TDZE Apt Elev	4003 964 964
---------------------------------	------------------------	-----------------------------	---

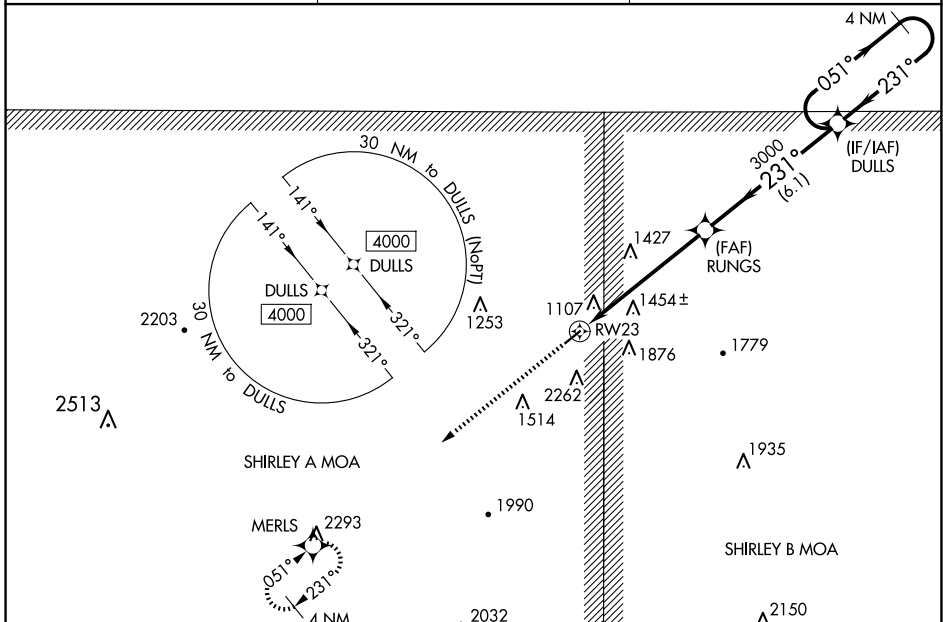
RNAV (GPS) RWY 23

SEARCY COUNTY (4A5)

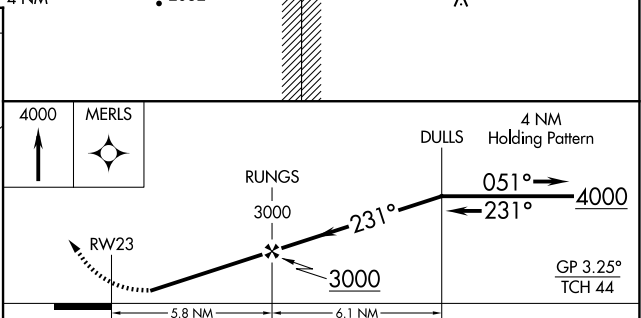
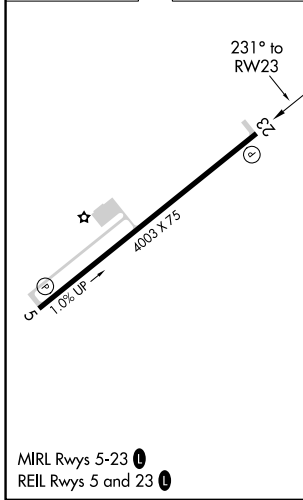
▽ DME/DME RNP-0.3 NA. Procedure NA at night. Circling NA SE of Rwy 5-23. Baro-VNAV NA. Use Flippin altimeter setting; when not received, use Harrison altimeter setting and increase all Cats LPV DA to 1555 and visibility 1/8 mile, LNAV/VNAV all Cats DA to 2016, and all MDA 60 feet, LNAV Cat B/C and Circling Cat C visibility 1/4 mile. Helicopter visibility reduction below 1 SM NA.

△ NA MISSED APPROACH: Climb to 4000 direct MERLS and hold.

FLP AWOS-3 132.075	MEMPHIS CENTER 126.85 281.55	CTAF 122.9 0
------------------------------	--	------------------------



ELEV 964	TDZE 964
----------	----------



CATEGORY	A	B	C	D
LPV DA	1512-1¾		548 (600-1¾)	NA
LNAV/VNAV DA	1973-4		1009 (1100-4)	NA
LNAV MDA	1760-1 796 (800-1)	1760-1¼ 796 (800-1¼)	1760-2½ 796 (800-2½)	NA
☑ CIRCLING	1760-1 796 (800-1)	1760-1¼ 796 (800-1¼)	1760-2½ 796 (800-2½)	NA

SC-1, 23 JAN 2025 to 20 FEB 2025

SC-1, 23 JAN 2025 to 20 FEB 2025