

WAAS CH <b>62838</b> <b>W05A</b>	APP CRS <b>051°</b>	Rwy Idg TDZE <b>954</b> Apt Elev <b>964</b>	<b>4003</b>
--	------------------------	---	-------------

**RNAV (GPS) RWY 5**  
SEARCY COUNTY (4A5)



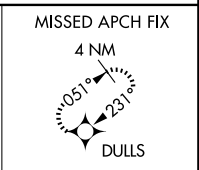
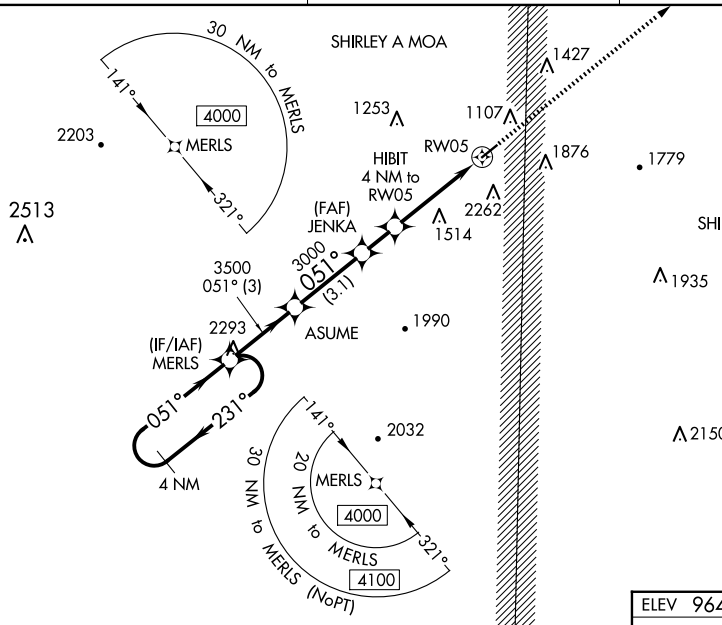
DME/DME RNP-0.3 NA. Circling NA SE of Rwy 5-23. Night Landing: Rwy 23 NA. Baro-VNAV NA. Use Flipping altimeter setting; when not received, use Harrison altimeter setting and increase all Cats LPV DA to 1396 and visibility 1/8 mile. LNAV/VNAV all Cats DA to 1981, and all MDA 60 feet. Helicopter visibility reduction below 3/4 SM NA.

**MISSED APPROACH:**  
Climb to 4000 direct  
DULLS and hold.

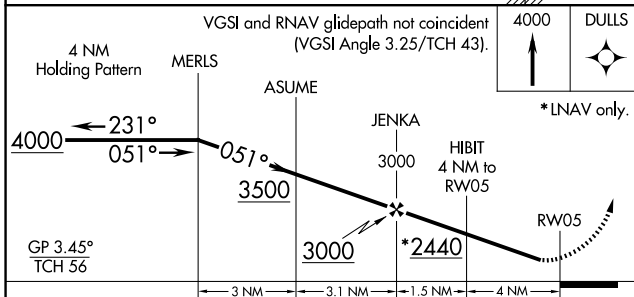
FLP AWOS-3  
**132.075**

MEMPHIS CENTER  
**126.85 281.55**

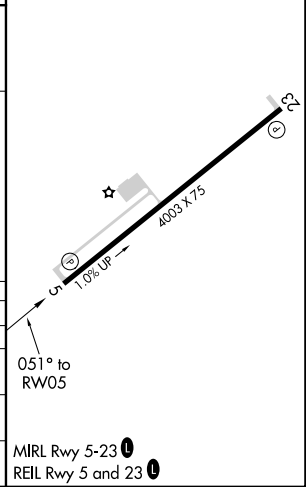
CTAF  
**122.9**



ELEV <b>964</b>	TDZE <b>954</b>
-----------------	-----------------



CATEGORY	A	B	C	D
LPV DA	1353-1¼	399 (400-1¼)		NA
LNAV/VNAV DA	1938-3	984 (1000-3)		NA
LNAV MDA	1920-1¼ 966 (1000-1¼)	1920-1½ 966 (1000-1½)	1920-3 966 (1000-3)	NA
CIRCLING	1920-1¼ 956 (1000-1¼)	1920-1½ 956 (1000-1½)	1920-3 956 (1000-3)	NA



MIRL Rwy 5-23  
REIL Rwy 5 and 23

SC-1, 23 JAN 2025 to 20 FEB 2025

SC-1, 23 JAN 2025 to 20 FEB 2025