

WAAS CH <b>58324</b> <b>W12A</b>	APP CRS <b>138°</b>	Rwy Idg TDZE Apt Elev	<b>6901</b> <b>2022</b> <b>2032</b>
--	------------------------	-----------------------------	---

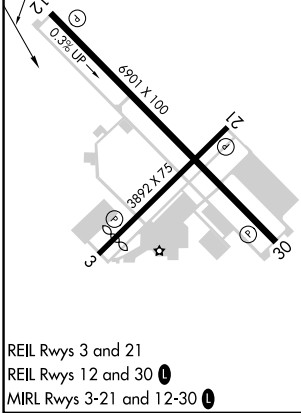
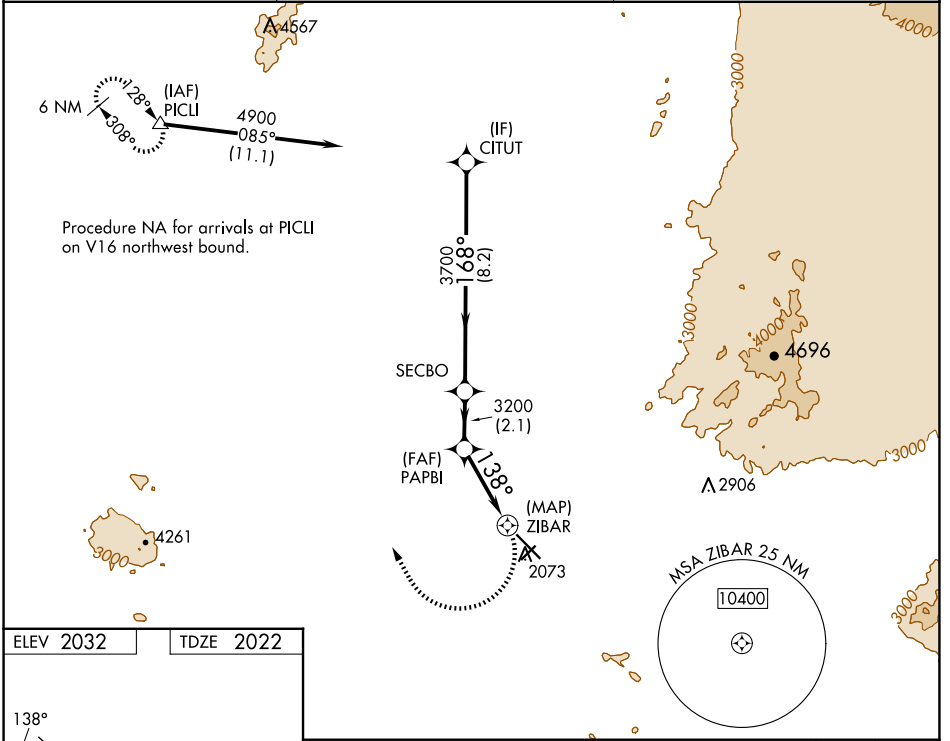
# RNAV (GPS) RWY 12

MARANA RGNL (AVQ)

**▽** DME/DME RNP-0.3 NA. When local altimeter setting not received, use Ryan Fld altimeter setting and increase all MDA 100 feet, increase LP and LNAV Cat C visibility ¼ SM and Circling Cat C visibility ½ SM.

**△NA** MISSED APPROACH: Climbing right turn to 6500 direct PICLI and hold, continue climb-in-hold to 6500.

AWOS-3 <b>118.375</b>	TUCSON APP CON <b>119.4 318.1</b>	UNICOM <b>123.0 (CTAF) 0</b>
--------------------------	--------------------------------------	---------------------------------



	CITUT	SECBO	PAPBI	ZIBAR	6500	PICLI
	4900		3700	3200		△
		168°	3.00° TCH 44	138°		
	8.2 NM		2.1 NM	3.1 NM	0.5 NM	
CATEGORY	A	B	C	D		
LP MDA	2420-1	398 (400-1)	2420-1 1/8 398 (400-1 1/8)	NA		
LNAV MDA	2440-1	418 (500-1)	2440-1 1/4 418 (500-1 1/4)	NA		
CIRCLING	2440-1 408 (500-1)	2540-1 508 (600-1)	2680-1 3/4 648 (700-1 3/4)	NA		

SW-4, 23 JAN 2025 to 20 FEB 2025

SW-4, 23 JAN 2025 to 20 FEB 2025