

WAAS CH <b>50346</b> <b>W35A</b>	APP CRS <b>345°</b>	Rwy Idg TDZE <b>63</b> Apt Elev <b>63</b>	<b>3601</b>
----------------------------------------	------------------------	-------------------------------------------------	-------------

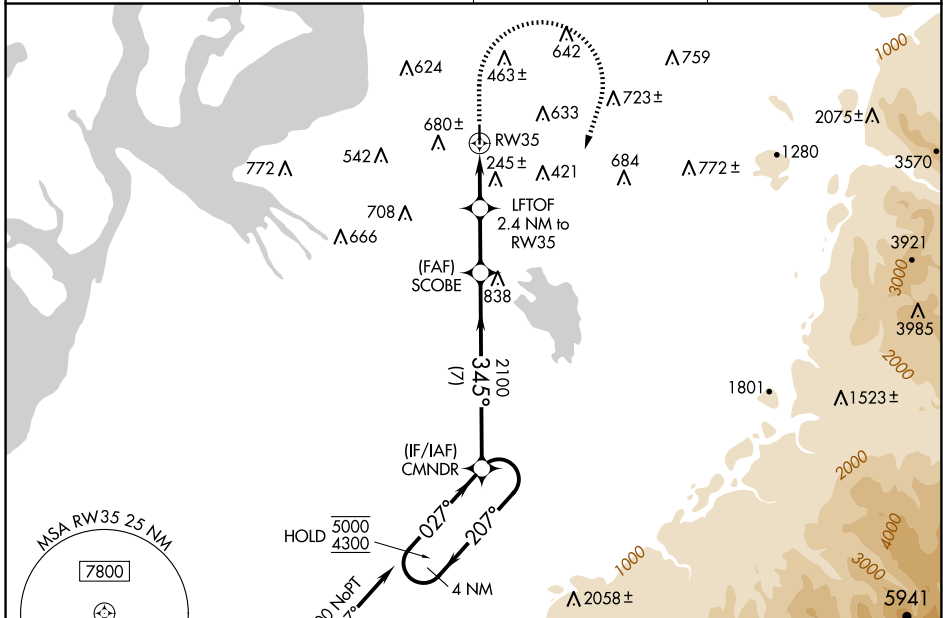
# RNAV (GPS) RWY 35

AUBURN MUNI (S5 $\emptyset$ )

RNP APCH - GPS.  
 ⚠ Circling NA west of Rwy 17-35. Baro-VNAV NA. Rwy 35 helicopter visibility reduction below 1 SM NA. Circling Rwy 17 NA at night. Use Seattle-Tacoma Intl altimeter setting.

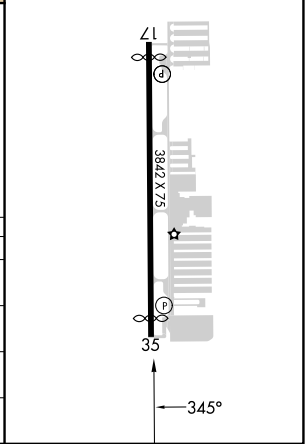
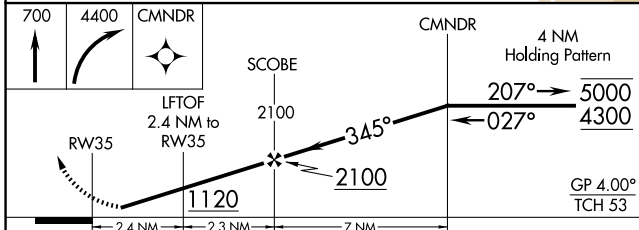
MISSED APPROACH: Climb to 700 then climbing right turn to 4400 direct CMNDR and hold, continue climb-in-hold to 4400.

SEA ASOS <b>118.0</b>	SEATTLE APP CON <b>123.85</b>	CLNC DEL <b>123.85</b>	UNICOM <b>122.975 (CTAF)</b> $\emptyset$
--------------------------	----------------------------------	---------------------------	---------------------------------------------



(IAF) CIDUG  $\Delta$  Procedure NA for arrivals at CIDUG on V495 southbound.  
 (FAF) SCOBCE  $\Delta$  838  
 (FAF) SCOBCE  $\Delta$  838  
 LFTOF 2.4 NM to RWY 35  
 RWY 35  
 708  $\Delta$   
 542  $\Delta$   
 680  $\Delta$   
 463  $\Delta$   
 642  $\Delta$   
 633  $\Delta$   
 723  $\Delta$   
 684  $\Delta$   
 772  $\Delta$   
 775  $\Delta$   
 1280  
 3570  
 3921  
 3985  
 2075  $\Delta$   
 1801  
 1523  $\Delta$   
 2058  $\Delta$   
 2440  
 5941  
 7800  
 MSA RWY 35 2.5 NM

ELEV 63	TDZE 63
MIRL Rwy 17-35 $\emptyset$	REIL Rws 17 and 35 $\emptyset$



CATEGORY	A	B	C	D
LPV DA	459-1 $\frac{1}{8}$	396 (400-1 $\frac{1}{8}$ )		NA
LNAV/VNAV DA	702-1 $\frac{3}{4}$	639 (700-1 $\frac{3}{4}$ )		NA
LNAV MDA	740-1	677 (700-1)		NA
CIRCLING	920-1 $\frac{1}{4}$ 857 (900-1 $\frac{1}{4}$ )	1040-1 $\frac{1}{2}$ 977 (1000-1 $\frac{1}{2}$ )		NA

NW-1, 23 JAN 2025 to 20 FEB 2025

NW-1, 23 JAN 2025 to 20 FEB 2025