

APP CRS	Rwy Idg	3934
237°	TDZE	365
	Apt Elev	365

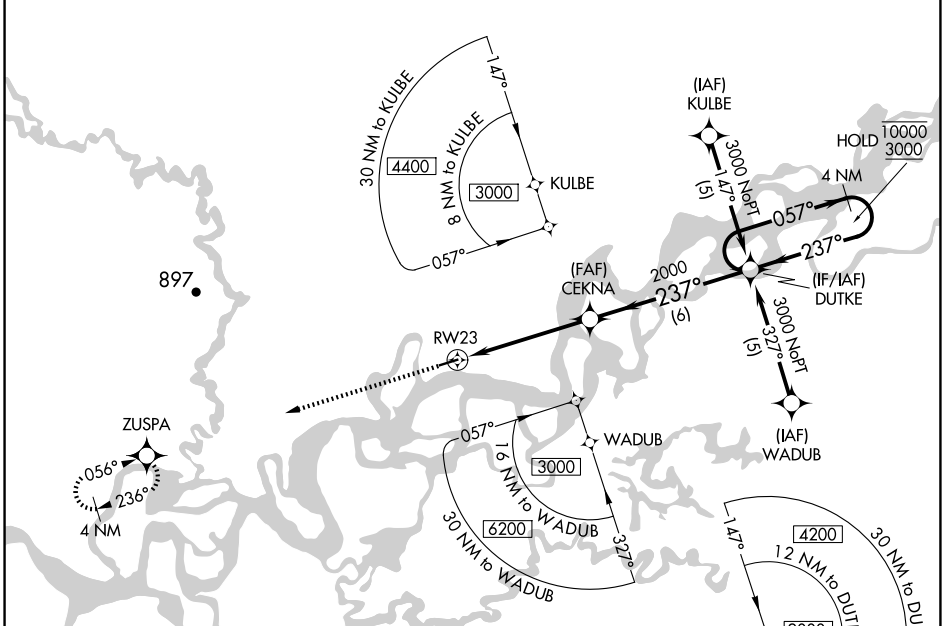
RNAV (GPS) RWY 23

BEAVER (WBQ)(PAWB)

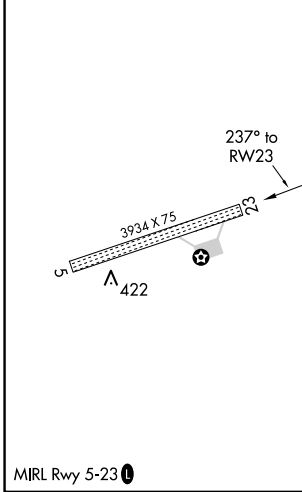
RNP APCH-GPS.
 ▼ Rwy 23 helicopter visibility reduction below 3/4 SM NA.
 ▲ NA Use Fort Yukon altimeter setting.

MISSED APPROACH: Climb to 3000 direct ZUSPA and hold.

FYU/PFYU AWOS-3P 125.8	FAIRBANKS RADIO 122.05 122.15	CTAF 122.9
----------------------------------	-----------------------------------------	----------------------



ELEV 365	TDZE 365
----------	----------



3000	ZUSPA	DUTKE	4 NM Holding Pattern
↑	✦		
	CEKNA		
	2000		
	5 NM	6 NM	
CATEGORY	A	B	C
LNAV MDA	940-1	575 (600-1)	940-1½ 575 (600-1½)
CIRCLING	940-1	575 (600-1)	940-1½ 575 (600-1½)
			D
			NA

AK, 26 DEC 2024 to 20 FEB 2025

AK, 26 DEC 2024 to 20 FEB 2025