

WAAS CH <b>42628</b> <b>W07A</b>	APP CRS <b>074°</b>	Rwy Idg TDZE Apt Elev	<b>5000</b> <b>1112</b> <b>1122</b>
--	------------------------	-----------------------------	---

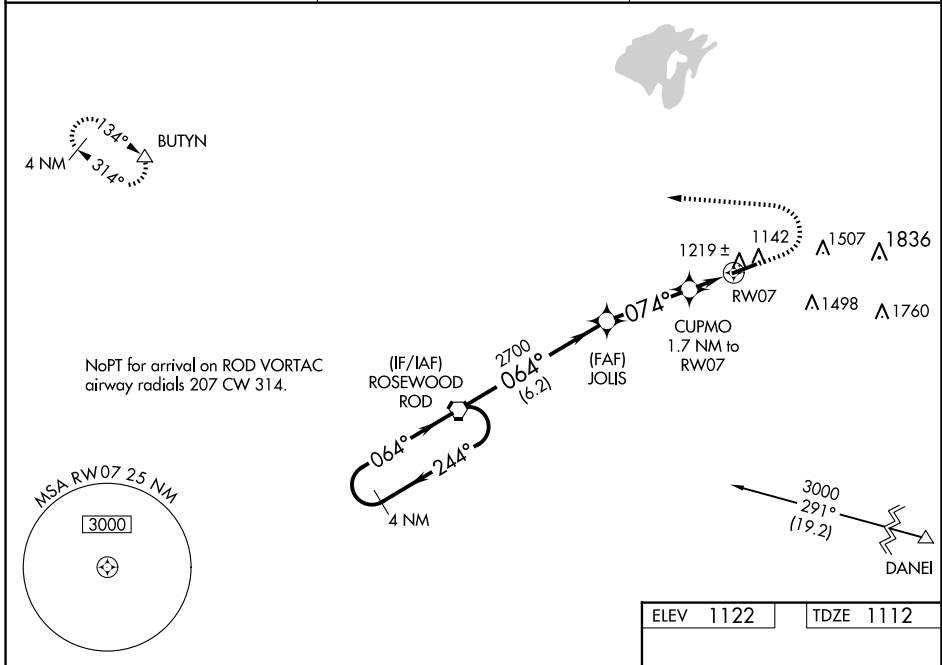
# RNAV (GPS) RWY 7

BELLEFONTAINE RGNL (E.D.J)

**NA** For uncompensated Baro-VNAV systems, LNAV/VNAV NA below -17°C (2°F) or above 37°C (98°F). DME/DME RNP-0.3 NA. VDP and Baro-VNAV NA with James M. Cox Dayton Intl altimeter setting. When local altimeter setting not received, use James M. Cox Dayton Intl altimeter setting; increase LPV DA to 1456 feet, LNAV/VNAV DA to 1598 feet, and all MDAs 100 feet, and increase LPV and LNAV/VNAV all Cats visibility ¼ SM, LNAV Cats C and D visibility ⅜ SM, and Circling Cat C visibility ½ SM and Cat D visibility ¼ SM.

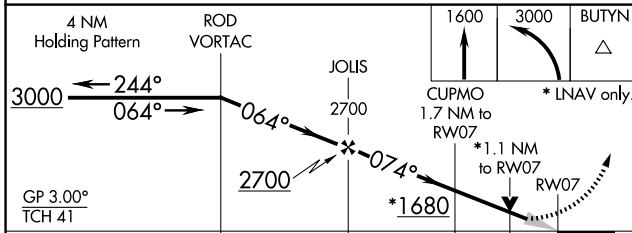
**MISSED APPROACH:**  
Climb to 1600 then climbing left turn to 3000 direct BUTYN and hold.

AWOS-3 <b>118.075</b>	COLUMBUS APP CON <b>134.45 294.5</b>	UNICOM <b>122.8 (CTAF) 0</b>
--------------------------	---	---------------------------------



EC-2, 23 JAN 2025 to 20 FEB 2025

EC-2, 23 JAN 2025 to 20 FEB 2025



ELEV 1122	TDZE 1112
MRL Rwy 7-25 <b>0</b> REIL Rwys 7 and 25 <b>0</b>	

CATEGORY	A	B	C	D
LPV DA		1362-7/8	250 (300-7/8)	
LNAV/VNAV DA		1504-13/8	392 (400-13/8)	
LNAV MDA		1480-1	368 (400-1)	
CIRCLING	1620-1 498 (500-1)	1640-1 518 (600-1)	1860-2 738 (800-2)	1980-23/4 858 (900-23/4)