

WAAS CH <b>45610</b> W16A	APP CRS <b>165°</b>	Rwy ldg TDZE <b>79</b> Apt Elev <b>79</b>
---------------------------------	------------------------	-------------------------------------------------

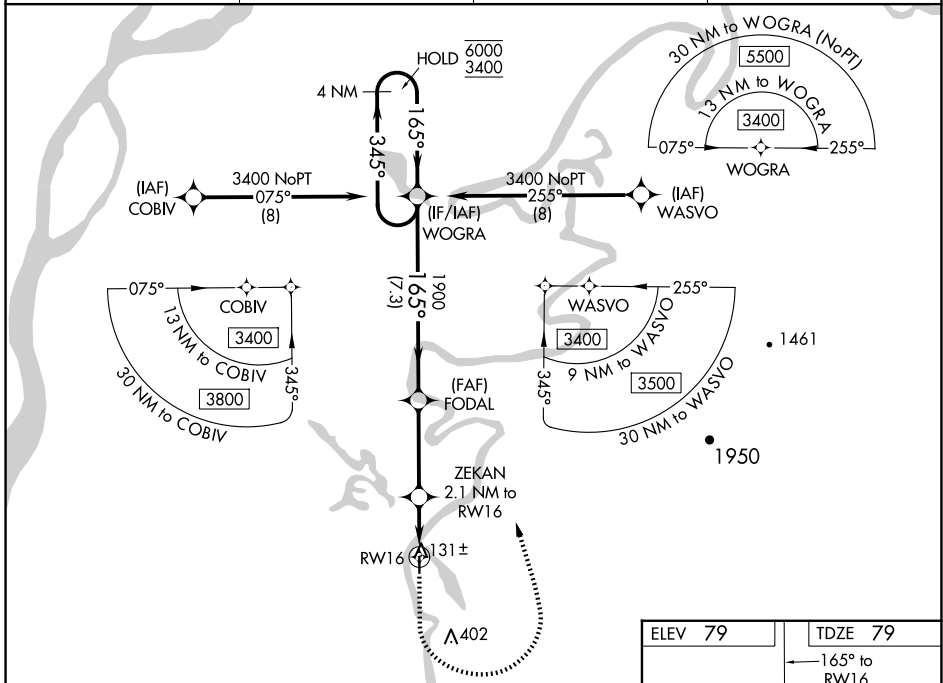
# RNAV (GPS) RWY 16

SHAGELUK (SHX) (PAHX)

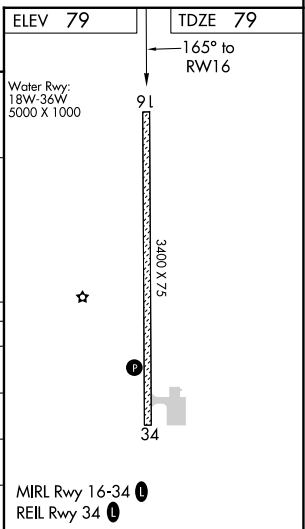
RNP APCH.  
 ▼ For uncompensated Baro-VNAV systems, LNAV/VNAV NA below -25°C or above 54°C.  
 ▲ Circling NA for Cats C and D east of Rwy 16-34.

MISSED APPROACH: Climb to 1000 then climbing left turn to 3400 direct WOGRA and hold.

AWOS-3P <b>121.575</b>	ANCHORAGE CENTER <b>135.7 335.5</b>	KENAI RADIO <b>122.4</b>	UNICOM <b>122.8 (CTAF)</b>
---------------------------	----------------------------------------	-----------------------------	-------------------------------



4 NM Holding Pattern 6000 ← 345° 3400 → 165° GP 3.00° TCH 40		WOGRA 1900 FODAL *800 ZEKAN 2.1 NM to RWY 16 *1.4 NM to RWY 16		1000 3400 WOGRA *LNAV only	
7.3 NM 3.5 NM 0.7 1.4 NM					
CATEGORY	A	B	C	D	
LPV DA		329-1	250 (300-1)		
LNAV/VNAV DA		329-1	250 (300-1)		
LNAV MDA		400-1	321 (400-1)		
▲ CIRCLING	460-1 381 (400-1)	540-1 461 (500-1)	540-1½ 461 (500-1½)	800-2¼ 721 (800-2¼)	



AK, 26 DEC 2024 to 20 FEB 2025

AK, 26 DEC 2024 to 20 FEB 2025