

WAAS CH <b>56538</b> <b>W18A</b>	APP CRS <b>181°</b>	Rwy ldg <b>5002</b> TDZE <b>845</b> Apt Elev <b>845</b>
--	------------------------	---

# RNAV (GPS) RWY 18

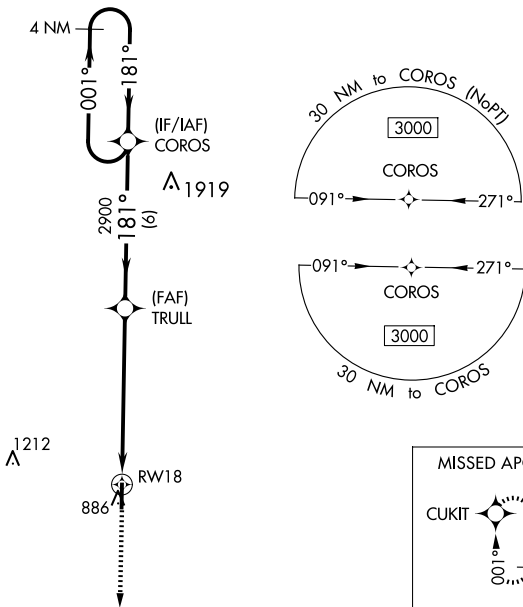
NORTH CENTRAL MISSOURI RGNL (M08)

**RNP APCH.**

**⚠ NA** For uncompensated Baro-VNAV systems, LNAV/VNAV NA below -16°C or above 54°C. Baro-VNAV and VDP NA when using Kirksville altimeter setting. When local altimeter setting not received, use Kirksville altimeter setting and increase LPV and LNAV/VNAV DA all Cats to 1179 feet and increase visibility 1/8 mile all Cats; increase all MDA 100 feet and increase LNAV Cat C/D visibility 3/8 mile and Circling Cat C visibility 1/4 mile. Rwy 18 helicopter visibility reduction below 3/4 SM NA.

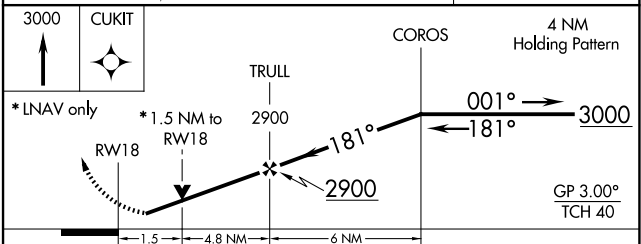
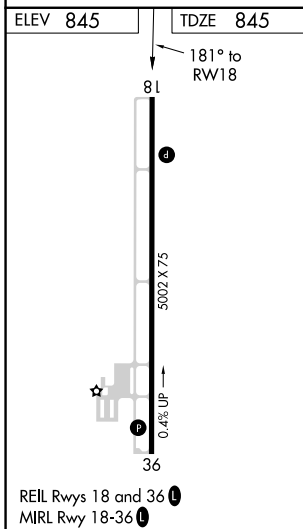
**MISSED APPROACH:** Climb to 3000 direct CUKIT and hold.

AWOS-2 <b>118.425</b>	KANSAS CITY CENTER <b>125.25 235.975</b>	CTAF <b>122.9 0</b>
--------------------------	---	------------------------



NC-3, 23 JAN 2025 to 20 FEB 2025

NC-3, 23 JAN 2025 to 20 FEB 2025



CATEGORY	A	B	C	D
LPV DA		1095-1	250 (300-1)	
LNAV/VNAV DA		1095-1	250 (300-1)	
LNAV MDA	1360-1	515 (600-1)	1360-1 3/8	515 (600-1 3/8)
<b>C</b> CIRCLING	1360-1	515 (600-1)	1360-1 1/2 515 (600-1 1/2)	1400-2 555 (600-2)