

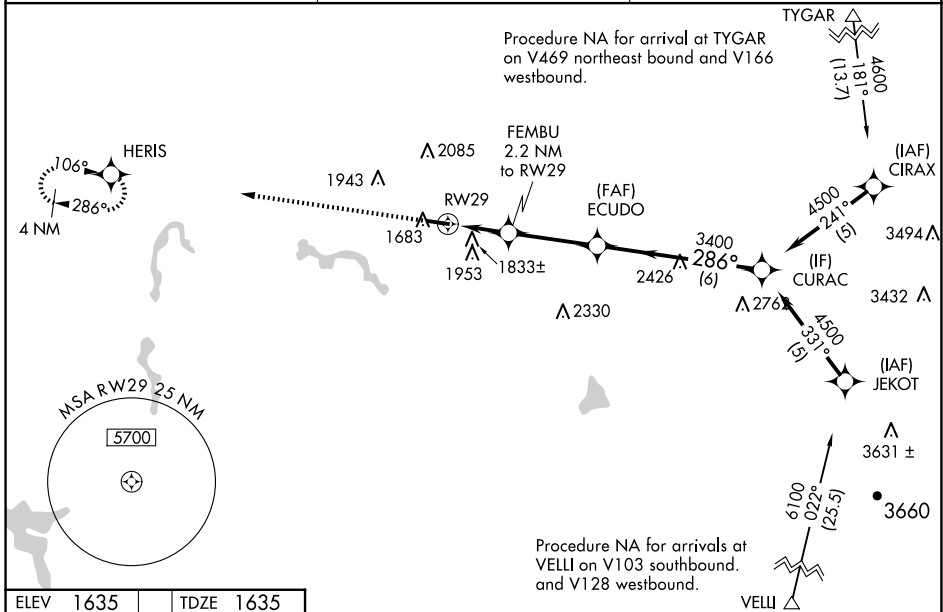
WAAS CH <b>56624</b> <b>W29A</b>	APP CRS <b>286°</b>	Rwy ldg TDZE Apt Elev	<b>4201</b> <b>1635</b> <b>1635</b>
--	------------------------	-----------------------------	---

# RNAV (GPS) RWY 29

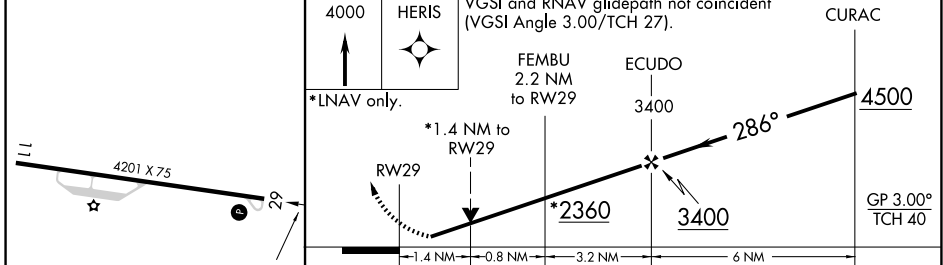
UPSHUR COUNTY RGNL (W22)

RNP APCH.	<p><b>MISSED APPROACH:</b> Climb to 4000 direct HERIS and hold.</p>
<p>For uncompensated Baro-VNAV systems, LNAV/VNAV NA below -18°C or above 54°C. Rwy 29 helicopter visibility reduction below 3/4 SM NA.</p>	

AWOS-3 <b>119.975</b>	CLARKSBURG APP CON ★ <b>121.15 284.65</b>	UNICOM <b>122.8 (CTAF)</b>
--------------------------	--	-------------------------------



ELEV 1635	TDZE 1635
-----------	-----------



CATEGORY	A	B	C	D
LPV DA	1885-1	250 (300-1)		NA
LNAV/VNAV DA	2125-1¾	490 (500-1¾)		NA
LNAV MDA	2100-1	465 (500-1)	2100-1¾ 465 (500-1¾)	NA
CIRCLING	2240-1 605 (700-1)	2260-1 625 (700-1)	2400-2¼ 765 (800-2¼)	NA

NE-4, 23 JAN 2025 to 20 FEB 2025

NE-4, 23 JAN 2025 to 20 FEB 2025