

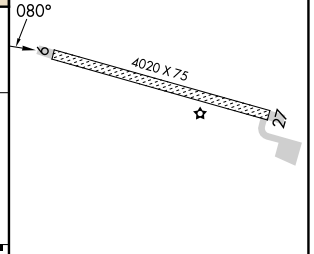
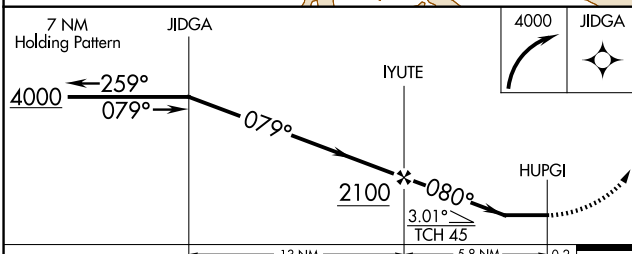
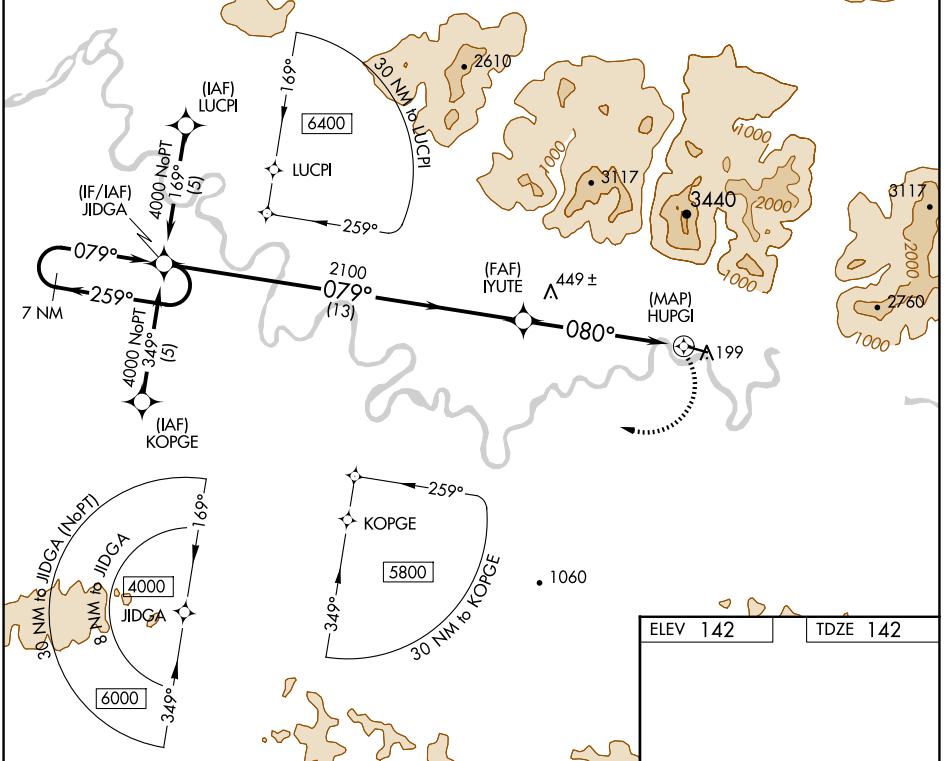
APP CRS	Rwy Idg	4020
080°	TDZE	142
	Apt Elev	142

RNAV (GPS) RWY 9

KOBUK (OBU) (PAOB)

RNP APCH - GPS.		<p>MISSED APPROACH: Climbing right turn to 4000 direct JIDGA and hold.</p>
	Use Amber altimeter setting. Circling NA north of Rwy 9-27.	
	Rwy 9 helicopter visibility reduction below 3/4 SM NA.	
	-37°C	Circling Rwy 27 NA at night.

AFM/PAFM AWOS-3P 132.1	ANCHORAGE CENTER 119.2 263.0	KOTZEBUE RADIO 122.0	CTAF 122.7
----------------------------------	--	--------------------------------	----------------------



CATEGORY	A	B	C	D
LNVA MDA	780-1	638 (700-1)	780-1 3/4 638 (700-1 3/4)	780-2 638 (700-2)
CIRCLING	780-1	638 (700-1)	780-1 3/4 638 (700-1 3/4)	840-2 1/4 698 (700-2 1/4)

ELEV 142	TDZE 142
----------	----------

MIRL Rwy 9-27

AK, 26 DEC 2024 to 20 FEB 2025

AK, 26 DEC 2024 to 20 FEB 2025