

WAAS CH 93518 W16A	APP CRS 164°	Rwy Idg TDZE Apt Elev	5089 2433 2437
--	------------------------	-----------------------------	---

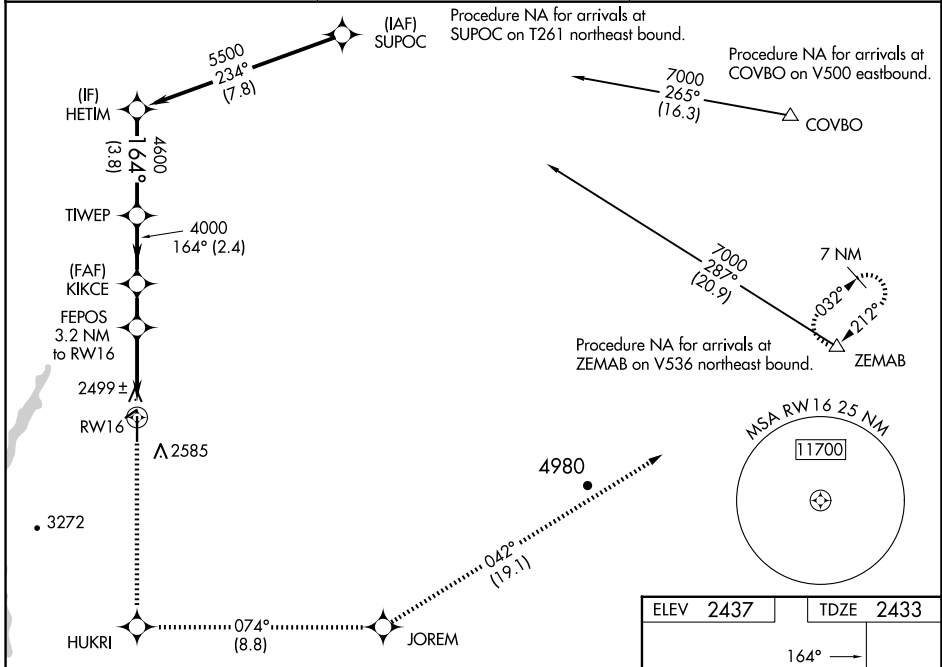
RNAV (GPS) RWY 16

MADRAS MUNI (S33)

Baro-VNAV NA when using Redmond altimeter setting. For uncompensated Baro-VNAV systems, LNAV/VNAV NA below -19°C (-2°F) or above 54°C (130°F). Rwy 16 helicopter visibility reduction below ¾ SM NA. DME/DME RNP-0.3 NA. When local altimeter setting not received, use Redmond altimeter setting and increase all DA and MDA 580 feet; increase LPV all Cats visibility 2% SM, LNAV/VNAV all Cats visibility 2% SM, LNAV and Circling Cat A visibility ¼ SM, LNAV and Circling Cat B visibility ½ SM, and increase LNAV and Circling Cat C visibility ¼ SM.

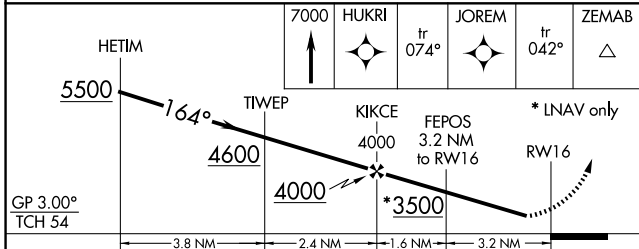
MISSED APPROACH: Climb to 7000 direct HUKRI and on track 074° to JOREM and on track 042° to ZEMAB and hold.

AWOS-3PT 132.425	SEATTLE CENTER 126.15 269.475	UNICOM 122.8 (CTAF) 📴
----------------------------	---	--



NW-1, 23 JAN 2025 to 20 FEB 2025

NW-1, 23 JAN 2025 to 20 FEB 2025



ELEV 2437	TDZE 2433
-----------	-----------

3D perspective diagram of the runway layout showing RWY 16, RWY 34, and taxiway dimensions (2701 x 50, 5091 x 75).

CATEGORY	A	B	C	D
LPV DA	2783-1½	350 (400-1½)		NA
LNAV/VNAV DA	2843-1¾	410 (500-1¾)		NA
LNAV MDA	3040-1	607 (700-1)	3040-1¾ 607 (700-1¾)	NA
CIRCLING	3040-1	603 (700-1)	3040-1¾ 603 (700-1¾)	NA

REIL Rwy 34 **📴**
MRL Rwy 16-34 **📴**