

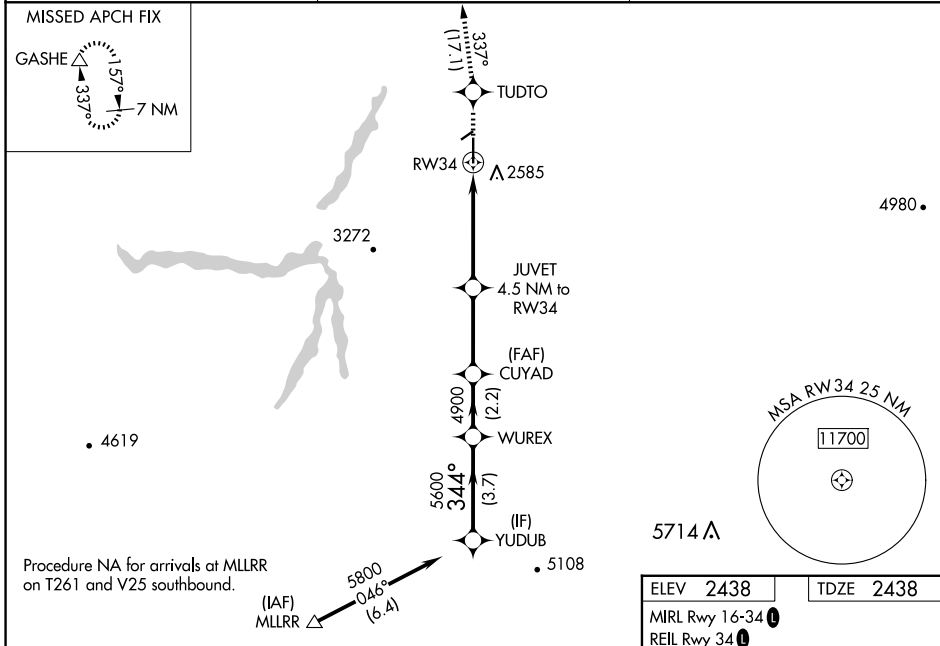
WAAS CH 60930 W34A	APP CRS 344°	Rwy Idg TDZE Apt Elev	5091 2438 2438
--	------------------------	-----------------------------	---

RNAV (GPS) RWY 34

MADRAS MUNI (S33)

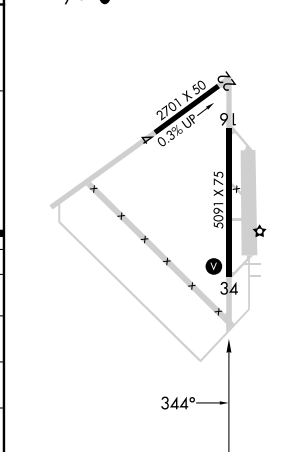
RNP APCH - GPS.		MISSED APPROACH: Climb to 7000 direct TUDTO and on track 337° to GASHE and hold, continue climb-in-hold to 7000.
<p>⚠ Circling Rwy 22 NA at night. Baro-VNAV and VDP NA when using Redmond altimeter setting. For uncompensated Baro-VNAV systems, LNAV/VNAV NA below 20°C -19°C or above 54°C. When local altimeter setting not received, use Redmond altimeter setting and increase LPV DA to 2832 feet and all visibilities ¾ SM. Increase LNAV/VNAV DA to 2846 feet and all visibilities ¼ SM. Increase all MDAs 160 feet and LNAV visibility Cat C ¾ SM, and Circling visibility Cat C ¾ SM.</p>		

AWOS-3PT 132.425	SEATTLE CENTER 126.15 269.475	UNICOM 122.8 (CTAF) 0
----------------------------	---	---------------------------------



	YUDUB	WUREX	CUYAD	JUVET	TUDTO	tr	GASHE
	5800	4900	4900	4900	7000	337°	△
	344°	5600	4900	4.5 NM to RW34	↑		
	GP 3.00°	4900	3920	1.6 NM to RW34	⬠		
	TCH 50	3.7 NM	2.2 NM	3.1 NM	2.9 NM	1.6 NM	
CATEGORY	A	B	C	D			
LPV DA		2688-¾	250 (300-¾)				NA
LNAV/VNAV DA		2702-7/8	264 (300-7/8)				NA
LNAV MDA	3000-1	562 (600-1)	3000-1½	562 (600-1½)			NA
CIRCLING	3000-1	3020-1	3020-1½	582 (600-1½)			NA
	562 (600-1)	582 (600-1)	582 (600-1½)				

ELEV 2438	TDZE 2438
MIRL Rwy 16-34 0	
REIL Rwy 34 0	



NW-1, 23 JAN 2025 to 20 FEB 2025

NW-1, 23 JAN 2025 to 20 FEB 2025