

WAAS CH <b>69428</b> <b>W35A</b>	APP CRS <b>349°</b>	Rwy Idg TDZE Apt Elev	<b>3920</b> <b>1384</b> <b>1384</b>
--	------------------------	-----------------------------	---

# RNAV (GPS) RWY 35

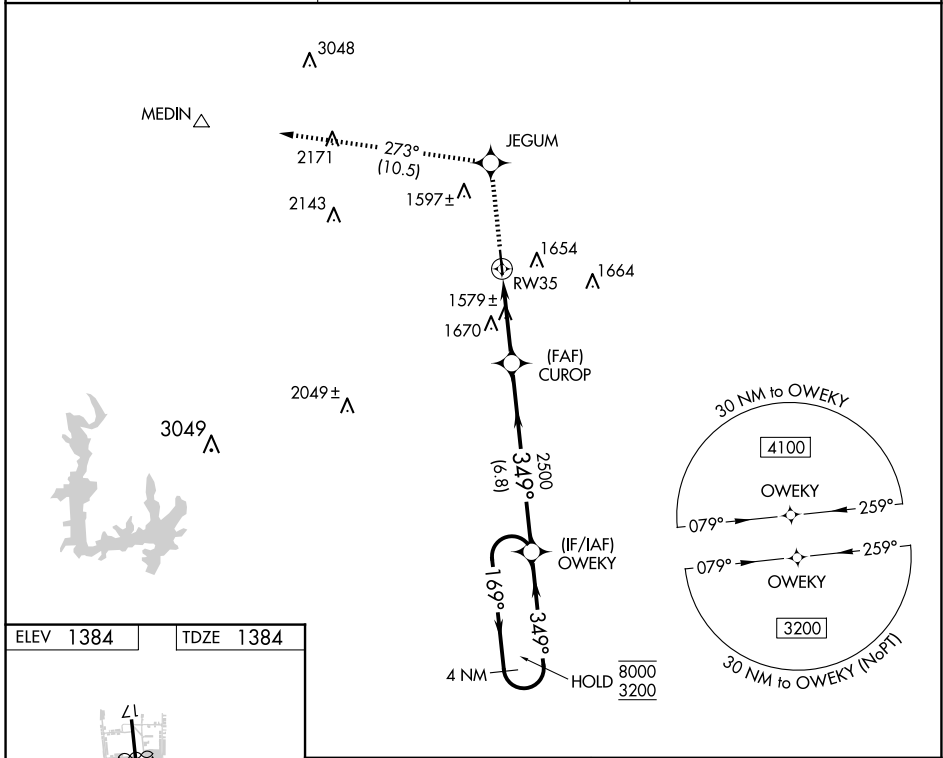
BOERNE STAGE AIRFIELD (5C1)

RNP APCH-GPS.

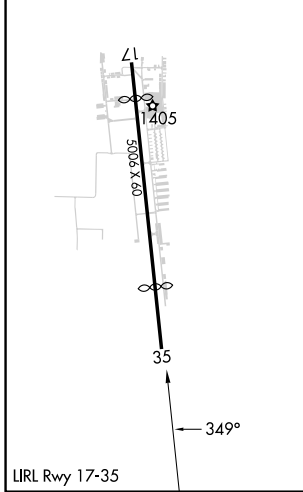
**⚠** Rwy 35 helicopter visibility reduction below 1 SM NA. When local altimeter setting not received, use San Antonio Intl altimeter setting and increase all MDAs 120 feet.

**⚠** MISSED APPROACH: Climb to 4100 direct JEGUM and on track 273° to MEDIN.

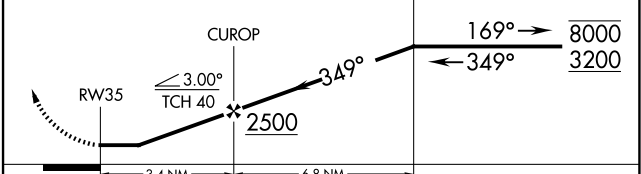
AWOS-3 <b>118.725</b>	SAN ANTONIO APP CON <b>125.1 307.0</b>	UNICOM <b>123.0 (CTAF)</b>
--------------------------	---	-------------------------------



ELEV 1384	TDZE 1384
-----------	-----------



4100	JEGUM	MEDIN
↑	◆	△
	tr 273°	



CATEGORY	A	B	C	D
LP MDA	1840-1	456 (500-1)	NA	
LNAV MDA	1920-1	536 (600-1)	NA	

SC-3, 23 JAN 2025 to 20 FEB 2025

SC-3, 23 JAN 2025 to 20 FEB 2025