

(TJANO1.TJANO) 24025

AL-10309 (FAA)

BOERNE STAGE AIRFIELD (5C1)
SAN ANTONIO, TEXAS

TJANO ONE DEPARTURE (RNAV)

SAN ANTONIO DEP CON
125.1 307.0

RNAV 1 - DME/DME IRU or GPS.
RADAR required.

**TOP ALTITUDE:
ASSIGNED BY ATC**

NOTE: For non-GPS equipped aircraft,
THX and SAT DME must be operational.



LVACA
5000

TAKEOFF MINIMUMS

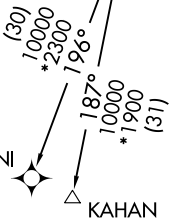
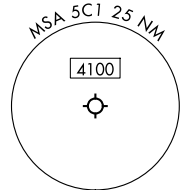
Rwy 17: Standard with minimum climb of
210'/NM to 2200.

Rwy 35: Standard with minimum climb of
250'/NM to 3800.

TJANO

10000
*2300
206°
(37)

TEEPY



ZANNI

KAHAN

DEPARTURE ROUTE DESCRIPTION

TAKEOFF RUNWAY 17: Climb on heading 169° or as assigned by ATC, for vectors to LVACA, thence

TAKEOFF RUNWAY 35: Climb on heading 349° or as assigned by ATC, for vectors to LVACA, thence

. . . . on track 205° to TJANO, then on Transition.
Maintain ATC assigned altitude.

KAHAN TRANSITION (TJANO1.KAHAN)
ZANNI TRANSITION (TJANO1.ZANNI)

Note: Chart not to scale.

SC-3, 23 JAN 2025 to 20 FEB 2025

SC-3, 23 JAN 2025 to 20 FEB 2025

TJANO ONE DEPARTURE (RNAV)
(TJANO1.TJANO) 25JAN24

SAN ANTONIO, TEXAS
BOERNE STAGE AIRFIELD (5C1)