

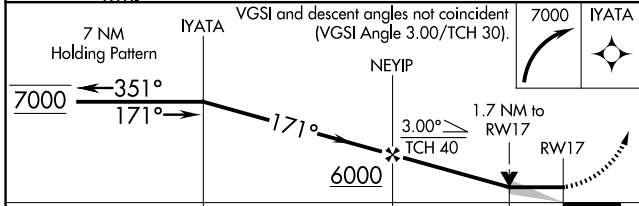
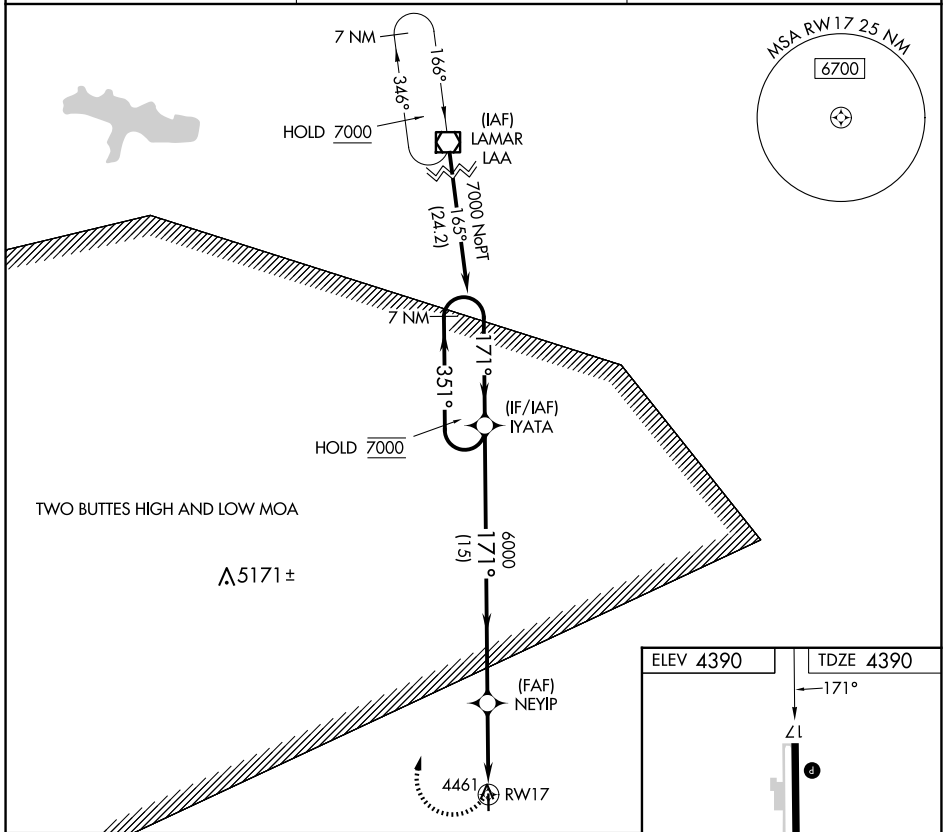
APP CRS	Rwy Idg	5000
171°	TDZE	4390
	Apt Elev	4390

RNAV (GPS) RWY 17

SPRINGFIELD MUNI (8V7)

RNP APCH - GPS.	MISSED APPROACH: Climbing right turn to 7000 direct IYATA and hold, continue climb-in-hold to 7000.
-----------------	---

AWOS-3PT 118.975	DENVER CENTER 133.4 377.175	CTAF 122.9
----------------------------	---------------------------------------	----------------------



ELEV 4390	TDZE 4390
171°	
ZL	
5000 x 60	
35	

MIRL Rwy 17-35

CATEGORY	A	B	C	D
LNVA MDA	4960-1	570 (600-1)	NA	
CIRCLING	5060-1 670 (700-1)	5080-1 690 (700-1)	NA	

SW-1, 23 JAN 2025 to 20 FEB 2025

SW-1, 23 JAN 2025 to 20 FEB 2025