

WAAS CH 50529 W30A	APP CRS 302°	Rwy Idg 3900
		TDZE 2247
		Apt Elev 2264

RNAV (GPS) RWY 30

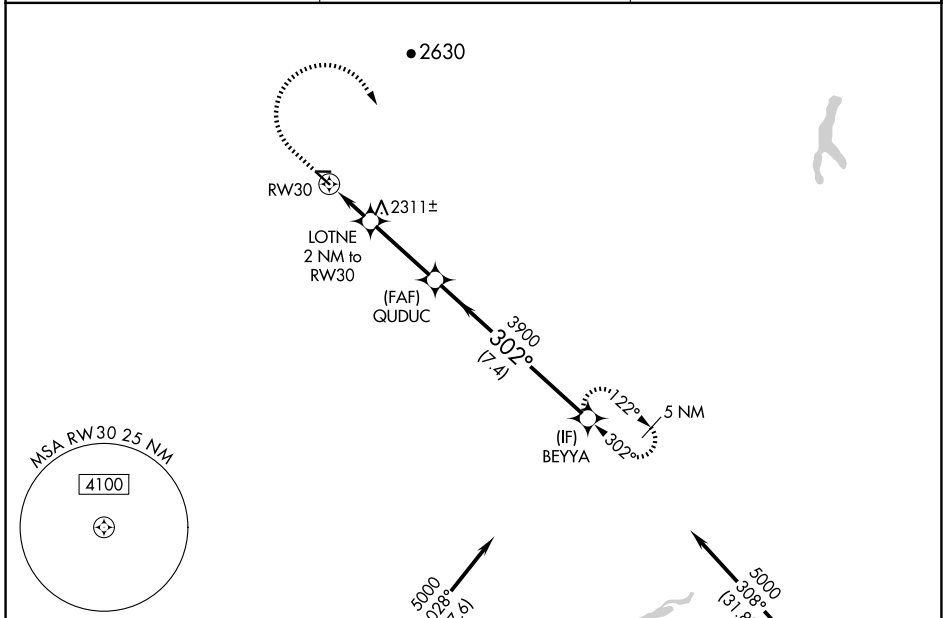
SHER-WOOD (PWD)

RNP APCH-GPS.

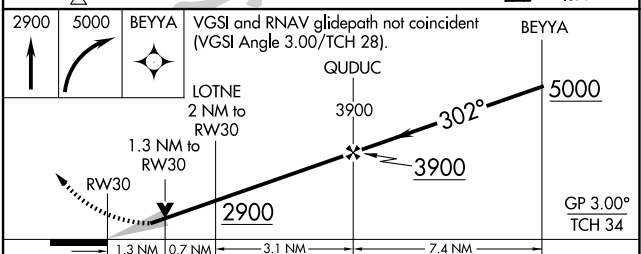
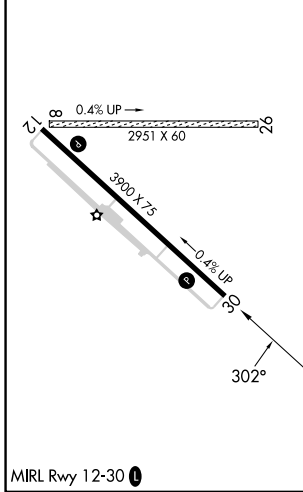
⚠ Circling Rwy 8, 26 NA at night. For uncompensated Baro-VNAV systems, LNAV/VNAV NA below -19°C or above 54°C. When local altimeter setting not received, use Williston altimeter setting.

MISSED APPROACH: Climb to 2900 then climbing right turn to 5000 direct BEYYA and hold.

AWOS-3PT 135.025	SALT LAKE CENTER 126.85 305.2	UNICOM 122.8 (CTAF) 0
----------------------------	---	---------------------------------



ELEV 2264	TDZE 2247
-----------	-----------



CATEGORY	A	B	C	D
LPV DA		2562- ³ / ₄	315 (300- ³ / ₄)	
LNAV/VNAV DA		2612-1	365 (400-1)	
LNAV MDA	2680-1	433 (500-1)	2680-1 ¹ / ₄	433 (500-1 ¹ / ₄)
C CIRCLING	2780-1	516 (600-1)	2880-1 ³ / ₄ 616 (700-1 ³ / ₄)	3100-2 ³ / ₄ 836 (900-2 ³ / ₄)

NW-1, 23 JAN 2025 to 20 FEB 2025

NW-1, 23 JAN 2025 to 20 FEB 2025