

(INDIE8.INDIE) 21280

AL-10328 (FAA)

HOUSTON EXEC (TME)  
HOUSTON, TEXAS

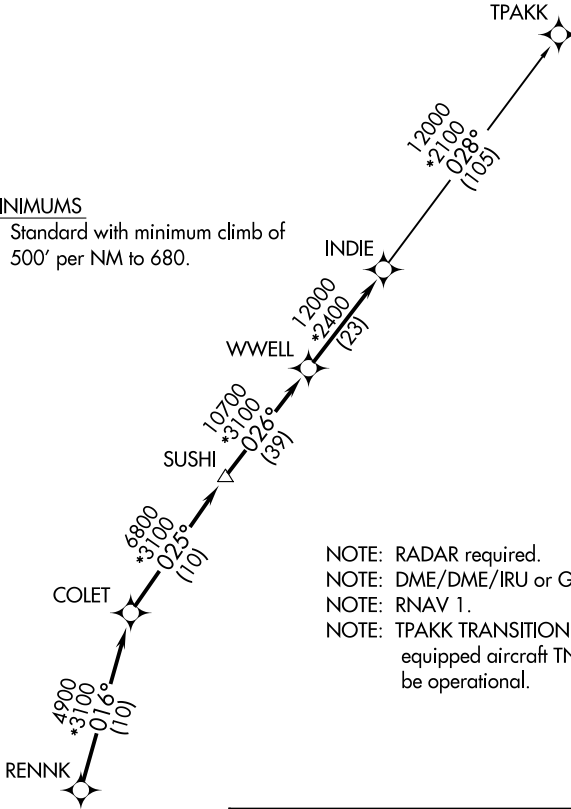
# INDIE EIGHT DEPARTURE (RNAV)

ATIS  
119.525  
CLNC DEL  
132.075  
GND CON  
132.075  
EXECUTIVE TOWER★  
126.975 (CTAF)  
HOUSTON DEP CON  
123.8 257.7

**TOP ALTITUDE:  
ASSIGNED BY ATC**

### TAKEOFF MINIMUMS

Rwy 18, 36: Standard with minimum climb of 500' per NM to 680.



- NOTE: RADAR required.
- NOTE: DME/DME/IRU or GPS required.
- NOTE: RNAV 1.
- NOTE: TPAKK TRANSITION: For non GPS equipped aircraft TNV DME must be operational.

### DEPARTURE ROUTE DESCRIPTION

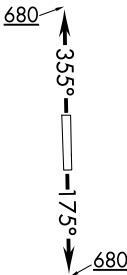
**TAKEOFF RUNWAY 18:** Climb on heading 175° to 680 for RADAR vectors to RENNK, thence . . . .

**TAKEOFF RUNWAY 36:** Climb on heading 355° to 680 for RADAR vectors to RENNK, thence . . . .

. . . . on track 016° to COLET, then on track 025° to SUSHI, then on track 026° to WWELL, then on track 026° to INDIE, then on (transition).

Maintain ATC assigned altitude. Expect filed altitude 10 minutes after departure.

TPAKK TRANSITION (INDIE8.TPAKK)



NOTE: Chart not to scale.

SC-5, 23 JAN 2025 to 20 FEB 2025

SC-5, 23 JAN 2025 to 20 FEB 2025

INDIE EIGHT DEPARTURE (RNAV)  
(INDIE8.INDIE) 07OCT21

HOUSTON, TEXAS  
HOUSTON EXEC (TME)