

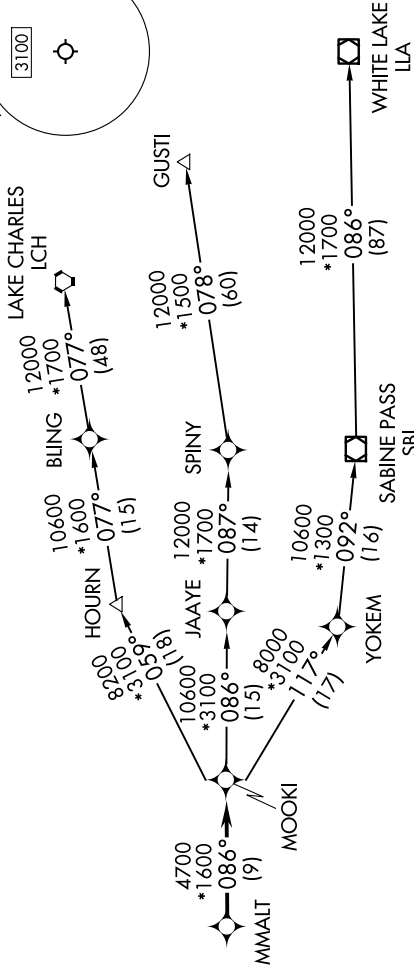
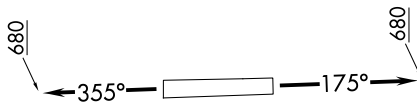
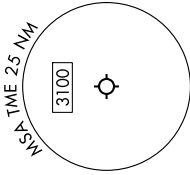
MMALT SEVEN DEPARTURE (RNAV)

SC-5, 23 JAN 2025 to 20 FEB 2025

HOUSTON DEP CON
123.8 257.7
ATIS
119.525
CLNC DEL
132.075
CTAF
126.975

RNAV 1 - DME/DME/IRU or GPS.
RADAR required.

TOP ALTITUDE:
ASSIGNED BY ATC



NOTE: GUSTI and LCH Transitions ATC assigned only for aircraft departing AXH, EFD, GLS, HPY, IWS, LBX, LVJ, SGR, TME, T00, T41 and 54T.

DEPARTURE ROUTE DESCRIPTION

TAKEOFF RUNWAY 18: Climb on heading 175° to 680, for RADAR vectors to MMALT, thence. . . .
TAKEOFF RUNWAY 36: Climb on heading 355° to 680, for RADAR vectors to MMALT, thence. . . .

. . . on track 086° to MOOKI, then on (transition). Maintain ATC assigned altitude.
Expect filed altitude 10 minutes after departure.

- GUSTI TRANSITION (MMALT7.GUSTI)
- LAKE CHARLES TRANSITION (MMALT7.LCH)
- WHITE LAKE TRANSITION (MMALT7.LLA)

TAKEOFF MINIMUMS
Rwys 18, 36: Standard with minimum climb of 500'/NM to 680.

NOTE: Chart not to scale.

MMALT SEVEN DEPARTURE (RNAV)

SC-5, 23 JAN 2025 to 20 FEB 2025