

APP CRS	Rwy Idg	<b>4206</b>
<b>277°</b>	TDZE	<b>251</b>
	Apt Elev	<b>251</b>

# RNAV (GPS) RWY 28

BIBB COUNTY (ØA8)

RNP APCH-GPS.

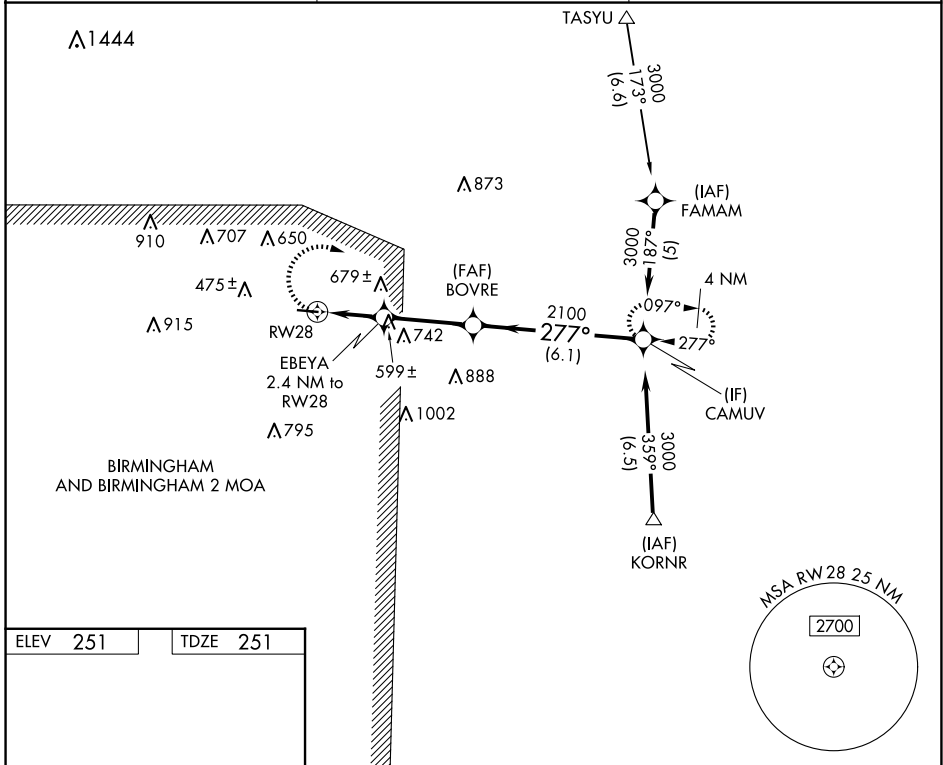
**▼** Procedure NA at night. Rwy 28 helicopter visibility reduction below ¾ SM NA.  
**▲NA** Use Tuscaloosa altimeter setting; when not received, use Alabaster altimeter setting; increase all MDAs 20 feet and visibility LNAV Cat C ¼ SM and Circling Cat B/C ¼ SM.

**MISSED APPROACH:**  
 Climbing right turn to 3000 direct CAMUV and hold.

TCL ASOS  
**132.825**

ATLANTA CENTER  
**132.25 263.025**

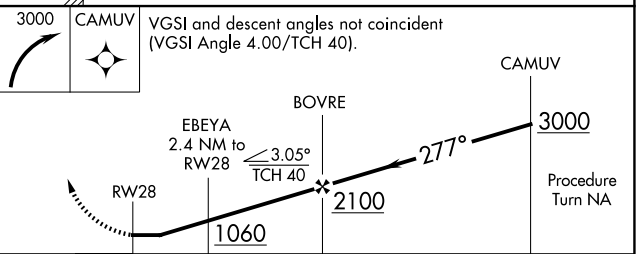
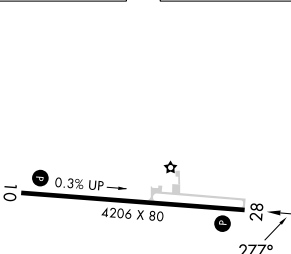
UNICOM  
**122.975 (CTAF) 0**



SE-4, 23 JAN 2025 to 20 FEB 2025

SE-4, 23 JAN 2025 to 20 FEB 2025

ELEV	251	TDZE	251
------	-----	------	-----



CATEGORY	A	B	C	D
LNAV MDA	920-1	669 (700-1)	920-1¾ 669 (700-1¾)	NA
CIRCLING	1020-1 769 (800-1)	1060-1 809 (900-1)	1120-2½ 869 (900-2½)	NA

MIRL Rwy 10-28 **0**  
 REIL Rwy 10 and 28 **0**