

APP CRS <b>322°</b>	Rwy Idg TDZE Apt Elev	<b>5125</b> <b>20</b> <b>20</b>
------------------------	-----------------------------	---------------------------------------

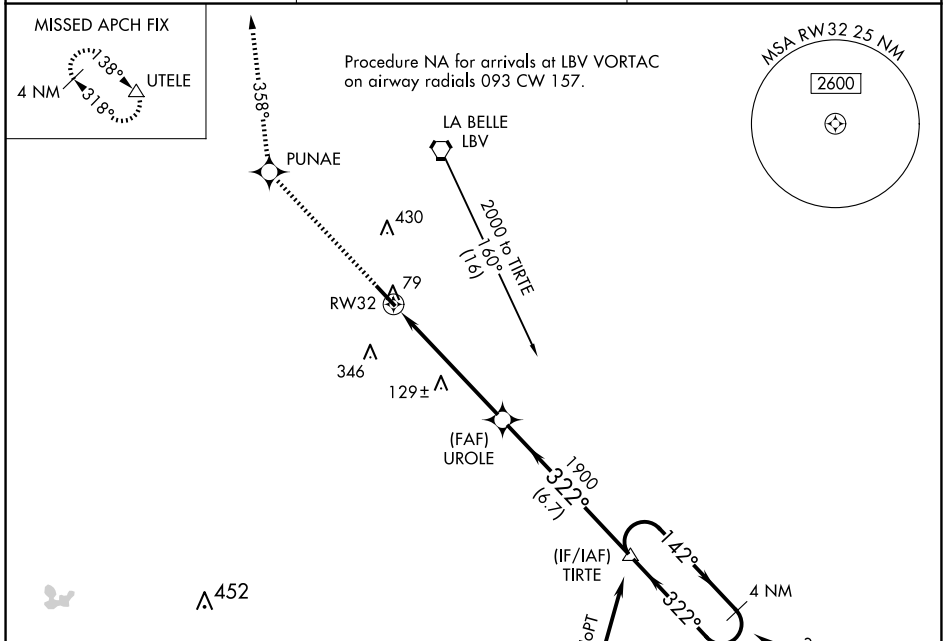
# RNAV (GPS) RWY 32

LA BELLE MUNI (X14)

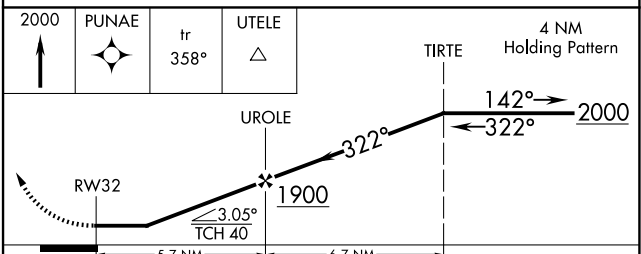
**NA** DME/DME RNP-0.3 NA. Helicopter visibility reduction below 3/4 SM NA. Use Southwest Florida Intl altimeter setting; when not received, use Page Fld altimeter setting and increase all MDAs 20 feet.

MISSED APPROACH: Climb to 2000 direct PUNAE then via 358° track to UTELE and hold.

RSW ASOS <b>124.65</b>	FORT MYERS APP CON <b>126.8</b>	UNICOM <b>122.8</b> (CTAF) <b>1</b>
---------------------------	------------------------------------	--



ELEV 20	<b>D</b>	TDZE 20
---------	----------	---------



CATEGORY	A	B	C	D
LNAV MDA	480-1	460 (500-1)	480-1 1/4 460 (500-1 1/4)	480-1 1/2 460 (500-1 1/2)
CIRCLING	580-1	560 (600-1)	800-2 1/4 780 (800-2 1/4)	800-2 1/2 780 (800-2 1/2)

MIRL Rwy 14-32 **1**  
REIL Rwys 14 and 32 **1**

SE-3, 23 JAN 2025 to 20 FEB 2025

SE-3, 23 JAN 2025 to 20 FEB 2025