

WAAS CH 99311 W12A	APP CRS 123°	Rwy ldg 4000 TDZE 42 Apt Elev 42
--	------------------------	---

RNAV (GPS) RWY 12

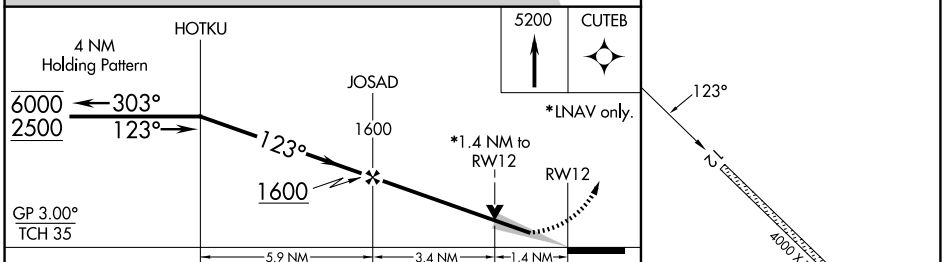
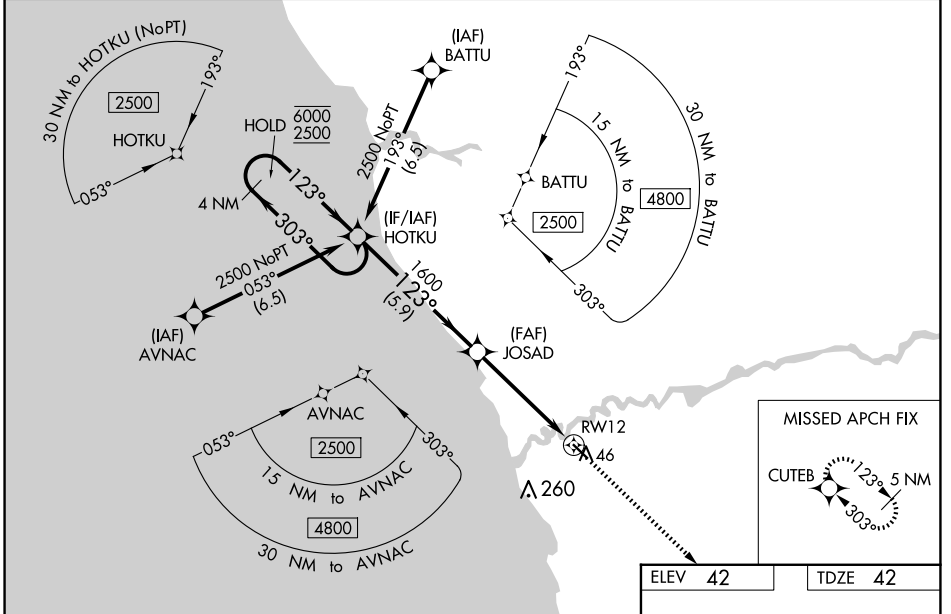
QUINHAGAK (AQH) (PAQH)

RNP APCH.

Procedure NA at night. Baro-VNAV and VDP NA when using Kipnuk altimeter setting. For uncompensated Baro-VNAV systems, LNAV/VNAV NA below -21°C or above 54°C. When local altimeter setting not received, use Kipnuk altimeter setting and increase all DA and MDA 160 feet; increase LPV all Cats visibility and LNAV/VNAV all Cats visibility 1/8 SM, LNAV Cats C, D visibility 3/8 SM, increase Circling Cat C visibility 1/2 SM, increase Circling Cat D visibility 1/4 SM.

MISSED APPROACH: Climb to 5200 direct CUTEB and hold, continue climb-in-hold to 5200.

AWOS-3P 121.575	ANCHORAGE CENTER 125.2 372.0	KENAI RADIO 122.1	UNICOM 122.8 (CTAF) 0
---------------------------	--	-----------------------------	---------------------------------



CATEGORY	A	B	C	D
LPV DA		292-1	250 (300-1)	
LNAV/VNAV DA		292-1	250 (300-1)	
LNAV MDA	500-1	458 (500-1)	500-1 3/8	458 (500-1 3/8)
C CIRCLING	500-1	458 (500-1)	580-1 1/2 538 (600-1 1/2)	600-2 558 (600-2)

ELEV 42 TDZE 42

MIRL Rwy 12-30 0

AK, 26 DEC 2024 to 20 FEB 2025

AK, 26 DEC 2024 to 20 FEB 2025