

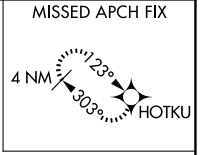
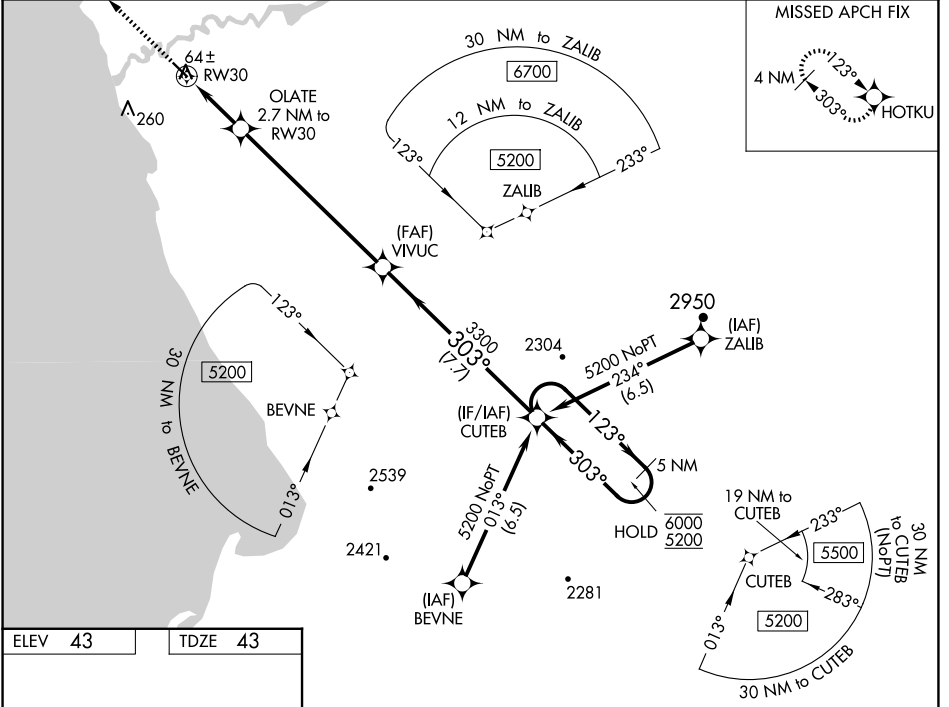
WAAS CH 58310 W30A	APP CRS 303°	Rwy ldg TDZE Apt Elev	4000 43 43
--	------------------------	-----------------------------	---------------------------------------

RNAV (GPS) RWY 30

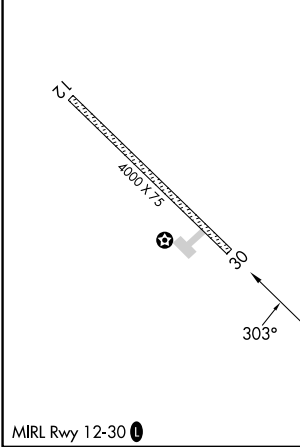
QUINHAGAK (AQH) (PAQH)

RNP APCH - GPS.	MISSED APPROACH: Climb to 2500 direct HOTKU and hold, continue climb-in-hold to 2500.
<p>For uncompensated Baro-VNAV systems, LNAV/VNAV NA below -25°C or above 54°C.</p>	

AWOS-3P 121.575	ANCHORAGE CENTER 125.2 372.0	KENAI RADIO 122.1	UNICOM 122.8 (CTAF) 0
---------------------------	--	-----------------------------	---------------------------------



ELEV 43	TDZE 43
---------	---------



2500	HOTKU				
↑					
OLATE 2.7 NM to RW30	VIVUC	CUTEB	5 NM Holding Pattern		
0.7 NM to RW30	3300	3300	123° → 6000	← 303° 5200	
RW30	960	3300	GP 3.10° TCH 35		
0.7	2 NM	7.1 NM	7.7 NM		
CATEGORY	A	B	C	D	
LPV DA		293-1	250 (300-1)		
LNAV/VNAV DA		293-1	250 (300-1)		
LNAV MDA		320-1	277 (300-1)		
CIRCLING	400-1 357 (400-1)	500-1 457 (500-1)	580-1½ 537 (600-1½)	600-2 557 (600-2)	

AK, 26 DEC 2024 to 20 FEB 2025

AK, 26 DEC 2024 to 20 FEB 2025