

WAAS CH 65633 W29A	APP CRS 285°	Rwy Idg TDZE 1183 Apt Elev 1183	3302
--	------------------------	---	-------------

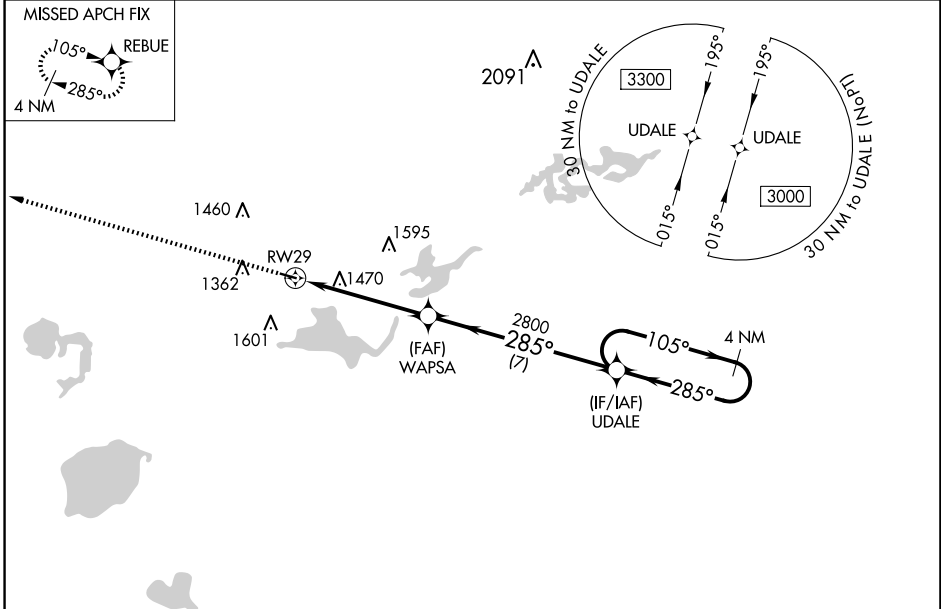
RNAV (GPS) RWY 29

PAYNESVILLE MUNI (PEX)

⚠ Baro-VNAV and VDP NA when using Litchfield altimeter setting. For uncompensated Baro-VNAV systems, LNAV/VNAV NA below -17°C (2°F) or above 54°C (130°F). DME/DME RNP-0.3 NA. Helicopter visibility reduction below ¾ SM NA. When local altimeter not received, use Litchfield altimeter setting and increase all DA 51 feet and all MDA 60 feet; increase LNAV/VNAV all Cats and LNAV and Circling Cat C visibility ¼ mile.

MISSED APPROACH:
Climb to 3000 direct REBUE and hold.

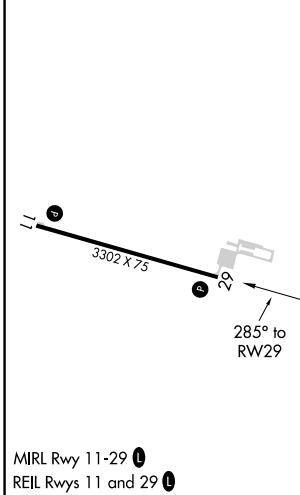
AWOS-3PT 120.35	MINNEAPOLIS CENTER 125.5 323.1	CTAF 122.9
---------------------------	--	----------------------



NC-1, 23 JAN 2025 to 20 FEB 2025

NC-1, 23 JAN 2025 to 20 FEB 2025

ELEV 1183	TDZE 1183
-----------	-----------



CATEGORY	A	B	C	D
LPV DA	1383-1		200 (200-1)	NA
LNAV/VNAV DA	1810-2 ¼		627 (700-2 ¼)	NA
LNAV MDA	1720-1	537 (600-1)	1720-1 ½ 537 (600-1 ½)	NA
CIRCLING	1720-1 537 (600-1)	1760-1 577 (600-1)	1920-2 737 (800-2)	NA