

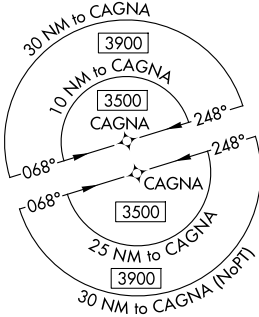
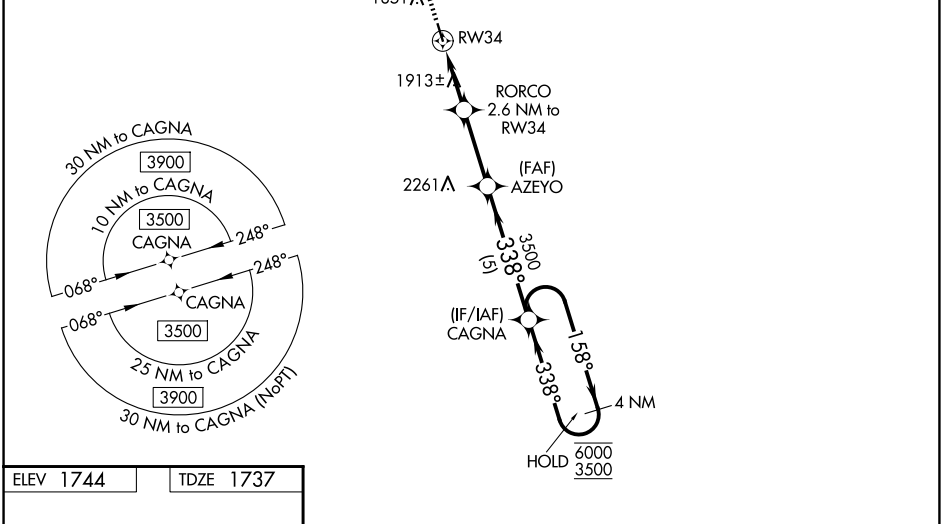
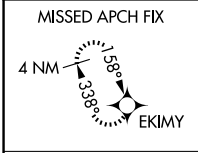
WAAS CH 42727 W34A	APP CRS 338°	Rwy Idg TDZE Apt Elev	3702 1737 1744
--	------------------------	-----------------------------	---

RNAV (GPS) RWY 34

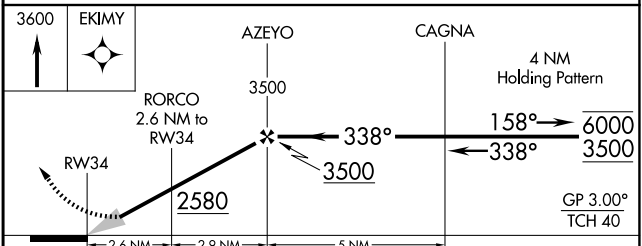
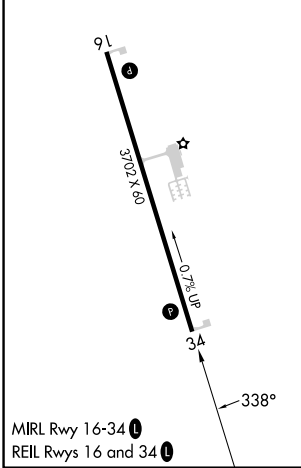
RED CLOUD MUNI (7V7)

RNP APCH - GPS.	MISSED APPROACH: Climb to 3600 direct EKIMY and hold.
Baro-VNAV NA. Use K82 altimeter setting; when not received, use HSI altimeter setting and increase LPV DA to 2092 feet and LNAV/VNAV DA to 2255 feet and all MDAs 60 feet.	

K82 AWOS-3PT 118.45	MINNEAPOLIS CENTER 119.4 278.8	CTAF 122.9
-------------------------------	--	----------------------



ELEV 1744	TDZE 1737
-----------	-----------



CATEGORY	A	B	C	D
LPV DA	2047-1	310 (400-1)		NA
LNAV/VNAV DA	2210-1 $\frac{3}{8}$	473 (500-1 $\frac{3}{8}$)		NA
LNAV MDA	2260-1	523 (600-1)		NA
CIRCLING	2280-1 536 (600-1)	2300-1 556 (600-1)		NA

NC-2, 23 JAN 2025 to 20 FEB 2025

NC-2, 23 JAN 2025 to 20 FEB 2025