

WAAS CH 61324 W23A	APP CRS 226°	Rwy Idg TDZE Apt Elev	5002 411 411
--	------------------------	-----------------------------	---

RNAV (GPS) RWY 23

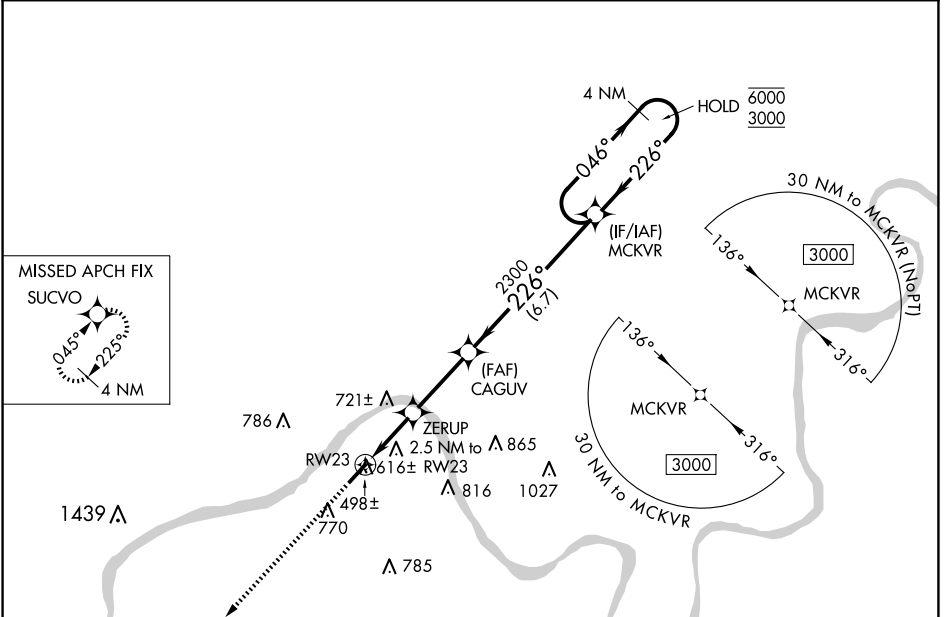
HANCOCK COUNTY/RON LEWIS FLD (KY8)

RNP APCH - GPS.

⚠ Rwy 23 helicopter visibility reduction below ¾ SM NA. For uncompensated Baro-VNAV systems, LNAV/VNAV NA below -15°C or above 54°C.

MISSED APPROACH:
Climb to 3000 direct SUCVO and hold.

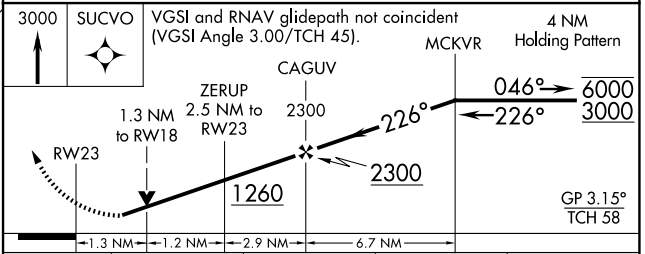
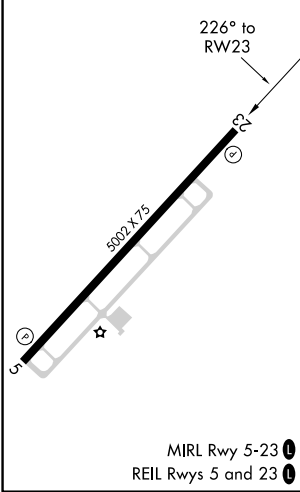
AWOS-3 119.775	EVANSVILLE APP CON ★ 124.025 290.9	UNICOM 123.0 (CTAF) 0
--------------------------	--	---------------------------------



SE-1, 23 JAN 2025 to 20 FEB 2025

SE-1, 23 JAN 2025 to 20 FEB 2025

ELEV 411	TDZE 411
----------	----------



CATEGORY	A	B	C	D
LPV DA	834-1¼	423 (500-1¼)		NA
LNAV/VNAV DA	880-1⅜	469 (500-1⅜)		NA
LNAV MDA	880-1	469 (500-1)	880-1⅜ 469 (500-1⅜)	NA
<input checked="" type="checkbox"/> CIRCLING	960-1 549 (600-1)	1080-1 669 (700-1)	1160-2¼ 749 (800-2¼)	NA