

| | | | |
|--|------------------------|-----------------------------|---|
| WAAS CH 42824 W05A | APP CRS 045° | Rwy Idg TDZE Apt Elev | 5002 411 412 |
|--|------------------------|-----------------------------|---|

RNAV (GPS) RWY 5
HANCOCK COUNTY/RON LEWIS FLD (KY8)

RNP APCH.

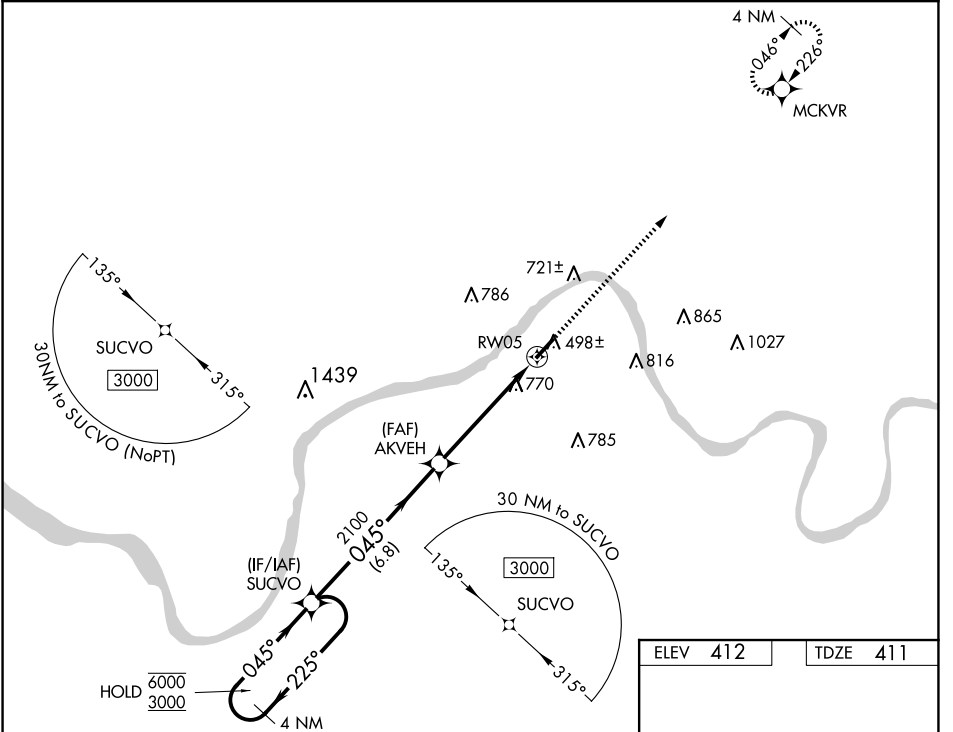
▼ Rwy 5 helicopter visibility reduction below ¼ SM NA. When local altimeter setting not received, use Owensboro altimeter setting and increase all MDAs 60 feet; increase LP and LNAV Cat C visibility ⅛ SM and Circling Cat C visibility ¼ SM.

MISSED APPROACH:
Climb to 3000 direct MCKVR and hold.

AWOS-3
119.775

EVANSVILLE APP CON ★
124.025 290.9

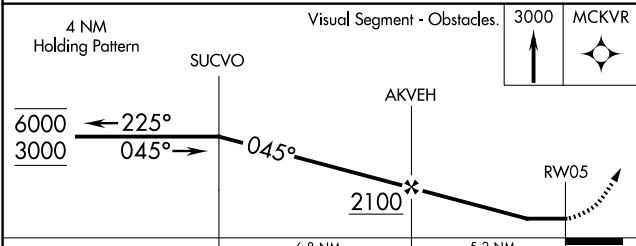
UNICOM
123.0 (CTAF) 0



SE-1, 23 JAN 2025 to 20 FEB 2025

SE-1, 23 JAN 2025 to 20 FEB 2025

| | |
|----------|----------|
| ELEV 412 | TDZE 411 |
|----------|----------|



| CATEGORY | A | B | C | D |
|----------|-----------------------|-----------------------|-------------------------|----|
| LP MDA | 1020-1 | 609 (700-1) | 1020-1¾ 609 (700-1¾) | NA |
| LNAV MDA | 1020-1 | 609 (700-1) | 1020-1¾ 609 (700-1¾) | NA |
| CIRCLING | 1020-1 608 (700-1) | 1080-1 668 (700-1) | 1080-1¾ 668 (700-1¾) | NA |

