

WAAS CH <b>50326</b> <b>W27A</b>	APP CRS <b>278°</b>	Rwy Idg TDZE Apt Elev	<b>4001</b> <b>660</b> <b>660</b>
--	------------------------	-----------------------------	---

# RNAV (GPS) RWY 27

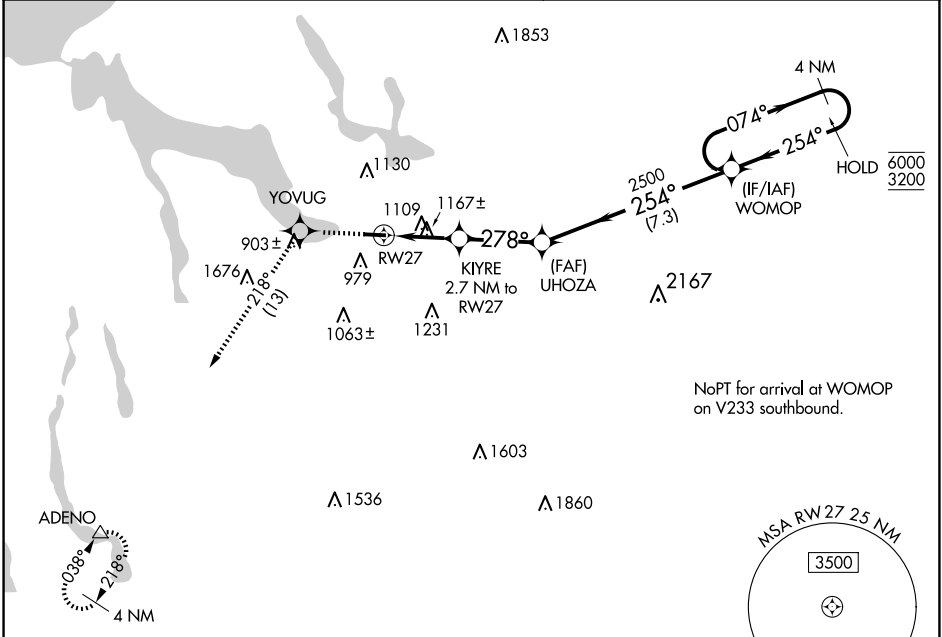
BOYNE CITY MUNI (N98)

RNP APCH.

**V** Procedure NA at night. Rwy 27 helicopter visibility reduction below 1 SM NA. Use  
**NA** Charlevoix altimeter setting, when not received, use Harbor Springs altimeter setting.

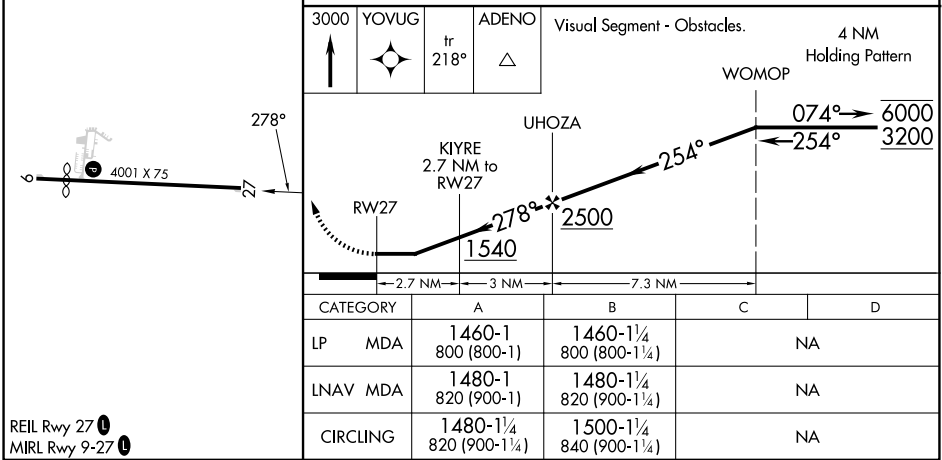
MISSED APPROACH: Climb to 3000 direct YOYUG and on track 218° to ADENO and hold.

CVX AWOS-3P <b>120.0</b>	MINNEAPOLIS CENTER <b>134.6 354.05</b>	UNICOM <b>122.8 (CTAF)</b>	<b>122.9</b>
-----------------------------	---	-------------------------------	--------------



NoPT for arrival at WOMOP on V233 southbound.

ELEV <b>660</b>	TDZE <b>660</b>
-----------------	-----------------



REIL Rwy 27  
MIRL Rwy 9-27

EC-1, 23 JAN 2025 to 20 FEB 2025

EC-1, 23 JAN 2025 to 20 FEB 2025