

WAAS CH <b>42917</b> <b>W04A</b>	APP CRS <b>041°</b>	Rwy Idg TDZE Apt Elev	<b>5040</b> <b>4957</b> <b>4985</b>
--	------------------------	-----------------------------	---

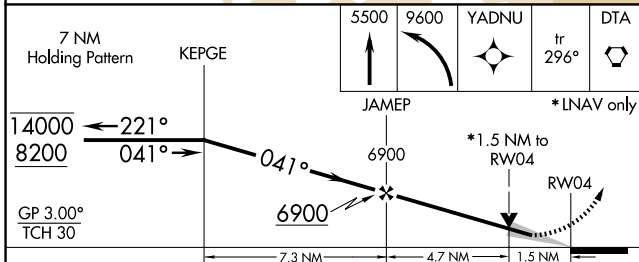
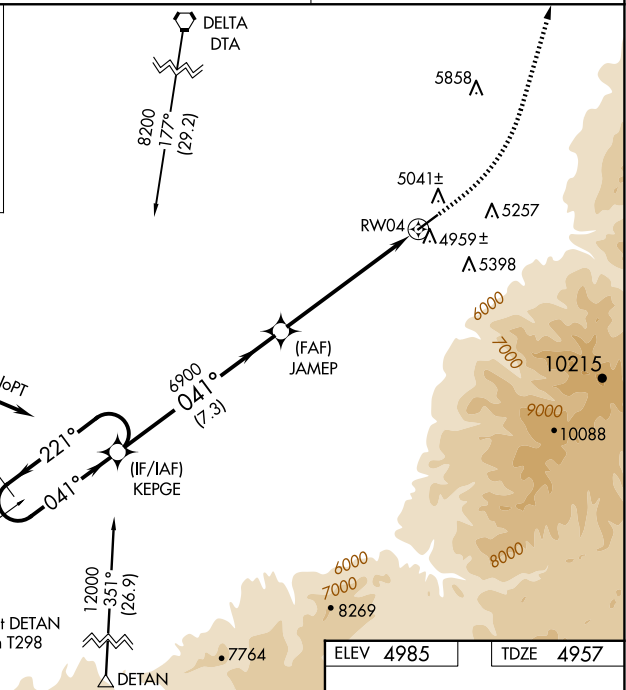
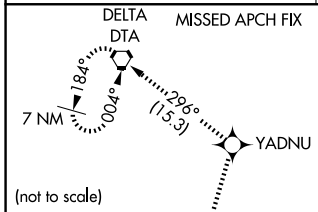
# RNAV (GPS) RWY 4

FILLMORE MUNI (FOM)

RNP APCH. MISSED APPROACH: Climb to 5500 then climbing left turn to 9600 direct YADNU and on track 296° to DTA VORTAC and hold.

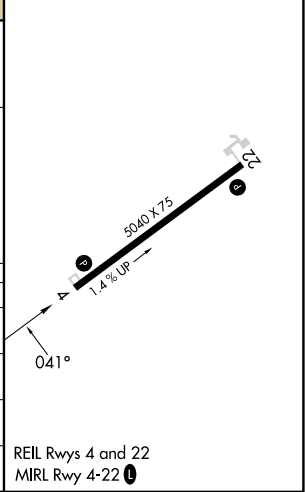
For uncompensated Baro-VNAV systems, procedure NA below -24°C or above 54°C.

AWOS-3 <b>133.775</b>	SALT LAKE CITY CENTER <b>125.575 379.275</b>	UNICOM <b>122.8 (CTAF) 0</b>
--------------------------	---	---------------------------------



ELEV 4985	TDZE 4957
-----------	-----------

CATEGORY	A	B	C	D
LPV DA	5214-1	257 (300-1)		NA
LNAV/VNAV DA	5315-1	358 (400-1)		NA
LNAV MDA	5420-1	463 (500-1)	5420-1½ 463 (500-1½)	NA
CIRCLING	5620-1	635 (700-1)	6200-3 1215 (1300-3)	NA



SW-4, 23 JAN 2025 to 20 FEB 2025

SW-4, 23 JAN 2025 to 20 FEB 2025