

RNAV (GPS) RWY 26

SOUTHERN WEST VIRGINIA RGNL (E,B,D)

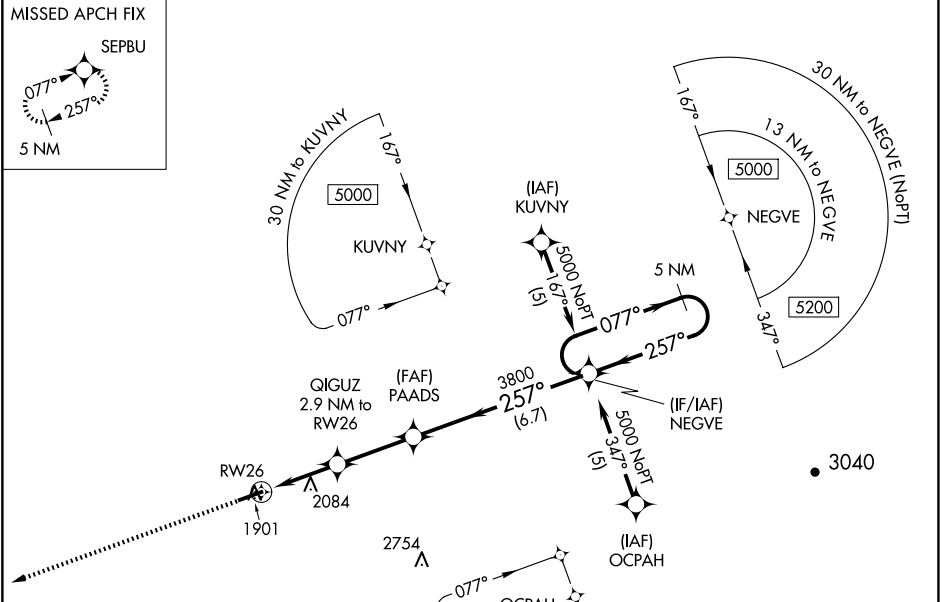
APP CRS 257°	Rwy Idg 5001
	TDZE 1883
	Apt Elev 1883

RNP APCH - GPS.

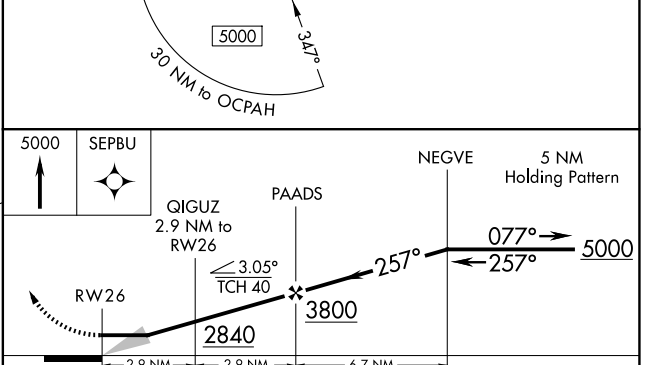
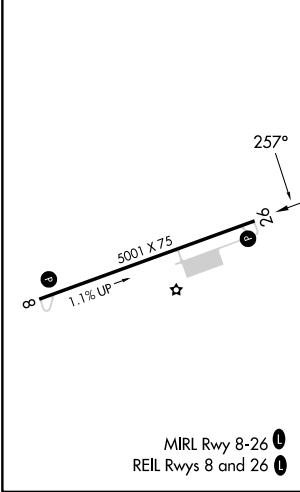
▼ Obtain local altimeter setting on CTAF; when not received, use Beckley altimeter setting: increase all MDAs 140 feet and visibility LNAV Cat A and Circling Cat A/B ¼ SM and Circling Cat C ½ SM.

▲ NA MISSED APPROACH: Climb to 5000 direct SEPBU and hold.

116 AWOS-3 120.625	INDIANAPOLIS CENTER 126.575 257.85	UNICOM 122.8 (CTAF) 0
------------------------------	----------------------------------------------	---------------------------------



ELEV 1883	TDZE 1883
------------------	------------------



CATEGORY	A	B	C	D
LNAV MDA	2660-1 777 (800-1)	2660-1¼ 777 (800-1¼)	2660-2½	777 (800-2½)
CIRCLING	2680-1	797 (800-1)	2760-2½ 877 (900-2½)	2900-3 1017 (1100-3)

NE-4, 23 JAN 2025 to 20 FEB 2025

NE-4, 23 JAN 2025 to 20 FEB 2025