

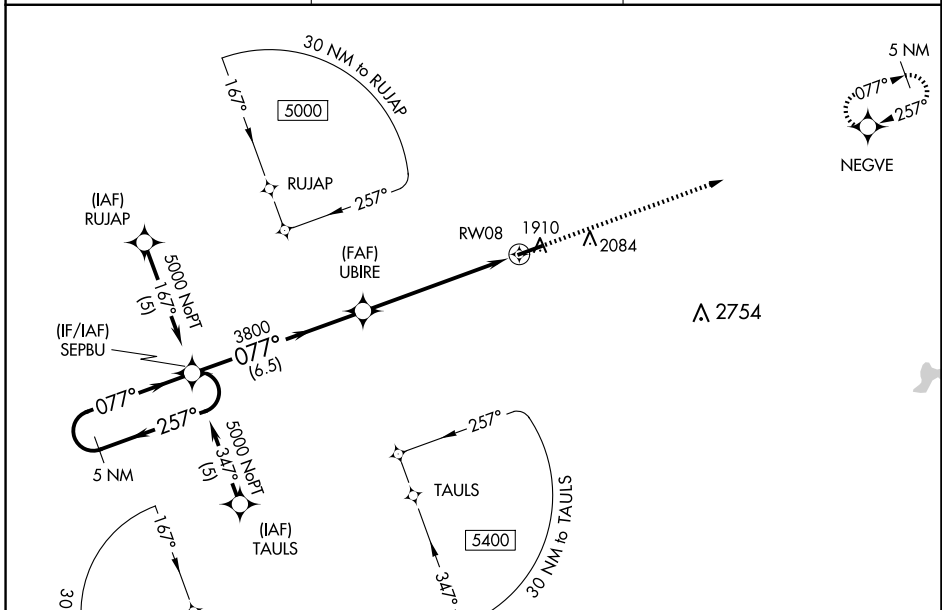
APP CRS	Rwy Idg	5001
077°	TDZE	1863
	Apt Elev	1883

RNAV (GPS) RWY 8

SOUTHERN WEST VIRGINIA RGNL (E,B,D)

RNP APCH - GPS.		MISSED APPROACH: Climb to 5000 direct NEGVE and hold.
▽ Obtain local altimeter setting on CTAF; when not received, use Beckley altimeter setting; increase all MDAs 140 feet and visibility LNAV Cat C/D and Circling Cat A/B ¼ SM and Circling Cat C ½ SM.		

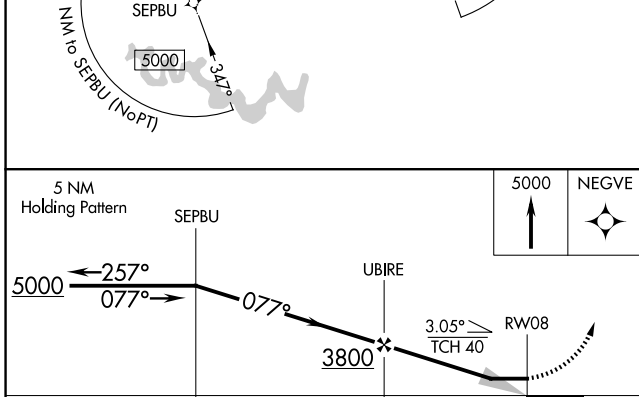
I16 AWOS-3 120.625	INDIANAPOLIS CENTER 126.575 257.85	UNICOM 122.8 (CTAF) 0
------------------------------	--	---------------------------------



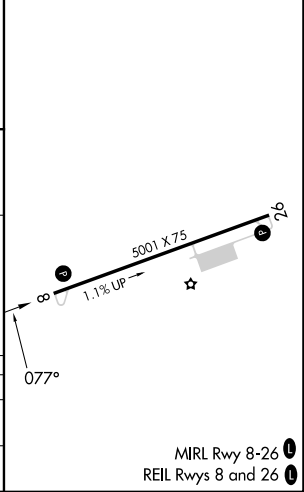
NE-4, 23 JAN 2025 to 20 FEB 2025

NE-4, 23 JAN 2025 to 20 FEB 2025

ELEV 1883	TDZE 1863
-----------	-----------



CATEGORY	A	B	C	D
LNAV MDA	2580-1 717 (700-1)	2580-1¼ 717 (700-1¼)	2580-2	717 (700-2)
CIRCLING	2680-1	797 (800-1)	2760-2½ 877 (900-2½)	2900-3 1017 (1100-3)



MIRL Rwy 8-26
REIL Rwy 8 and 26