

WAAS CH <b>62936</b> <b>W30A</b>	APP CRS <b>296°</b>	Rwy Idg <b>3550</b> TDZE <b>1647</b> Apt Elev <b>1650</b>
--	------------------------	---

# RNAV (GPS) RWY 30

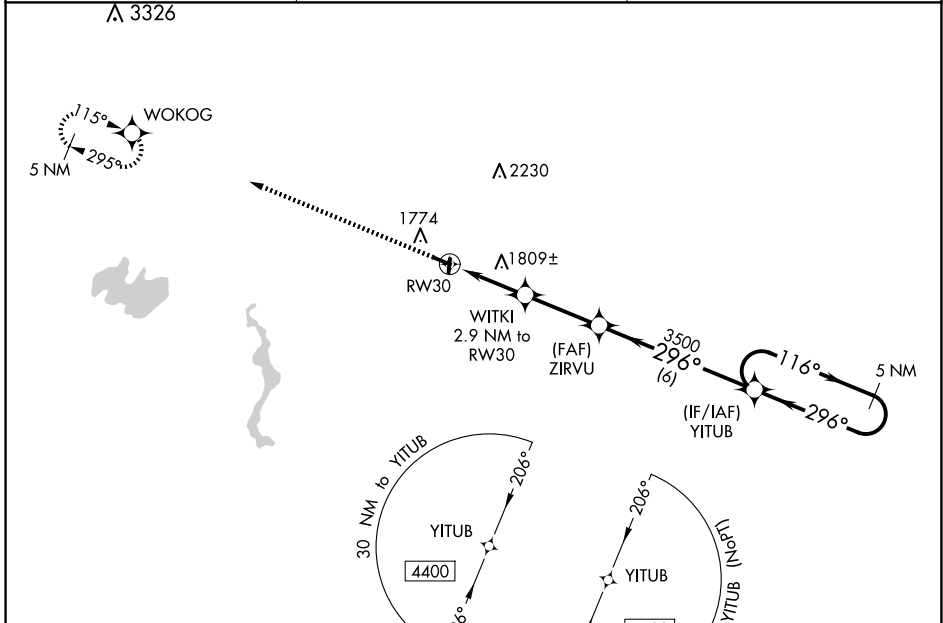
CRANDON/STEVE CONWAY MUNI (Y55)

RNP APCH - GPS.

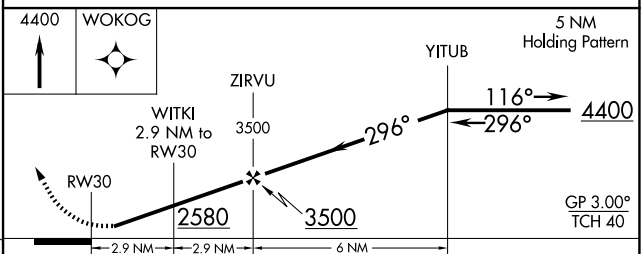
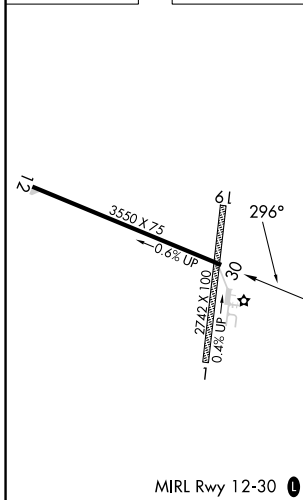
**NA** Baro-VNAV NA. Rwy 30 helicopter visibility reduction below 3/4 SM NA. Use Rhinelander altimeter setting, when not received, use Eagle River altimeter setting and increase LPV DA to 1965 feet; increase LNAV/VNAV DA to 2012 feet; increase all MDAs 20 feet. Circling to Rws 1, 19 NA.

MISSED APPROACH: Climb to 4400 direct WOKOG and hold.

RHI ASOS <b>126.825</b>	MINNEAPOLIS CENTER <b>133.65 281.5</b>	CTAF <b>122.9</b>
----------------------------	---	----------------------



ELEV 1650	TDZE 1647
-----------	-----------



CATEGORY	A	B	C	D
LPV DA	1958-1	311 (400-1)		NA
LNAV/VNAV DA	2005-1	358 (400-1)		NA
LNAV MDA	2120-1	473 (500-1)	2120-1 3/8 473 (500-1 3/8)	NA
<b>CIRCLING</b>	2300-1 650 (700-1)	2340-1 690 (700-1)	2360-2 710 (800-2)	NA

EC-3, 23 JAN 2025 to 20 FEB 2025

EC-3, 23 JAN 2025 to 20 FEB 2025