

APP CRS	Rwy Idg	<b>2004</b>
<b>241°</b>	TDZE	<b>1436</b>
	Apt Elev	<b>1436</b>

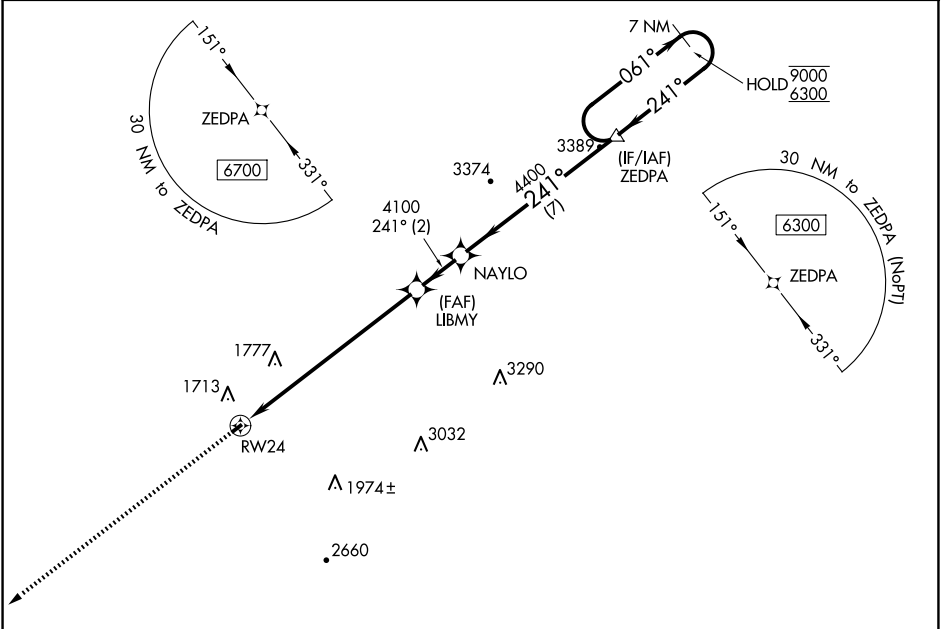
# RNAV (GPS) RWY 24

EAGLE'S NEST (W13)

RNP APCH.  
 Procedure NA at night. Rwy 24 helicopter visibility reduction below 1 SM NA.

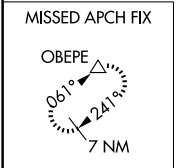
MISSED APPROACH: Climb to 6700 direct OBEPE and hold, continue climb-in-hold to 6700.

AWOS-3PT <b>118.625</b>	POTOMAC APP CON <b>132.85 323.125</b>	UNICOM <b>123.05 (CTAF)</b>
----------------------------	--	--------------------------------

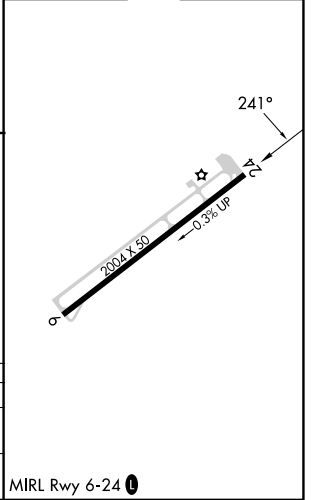
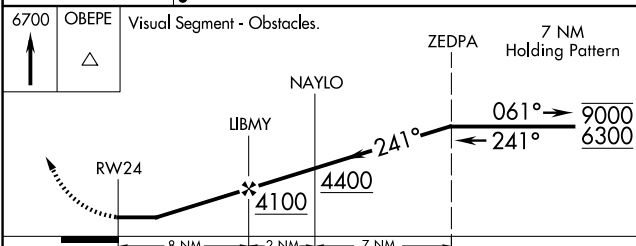


NE-3, 23 JAN 2025 to 20 FEB 2025

NE-3, 23 JAN 2025 to 20 FEB 2025



ELEV 1436	TDZE 1436
-----------	-----------



CATEGORY	A	B	C	D
LNNAV MDA	2640-3	1204 (1300-3)		NA
CIRCLING	2640-3	1204 (1300-3)		NA

MIRL Rwy 6-24