

APP CRS **061°**  
 Rwy Idg **2004**  
 TDZE **1436**  
 Apt Elev **1436**

**RNAV (GPS) RWY 6**  
 EAGLE'S NEST (W13)

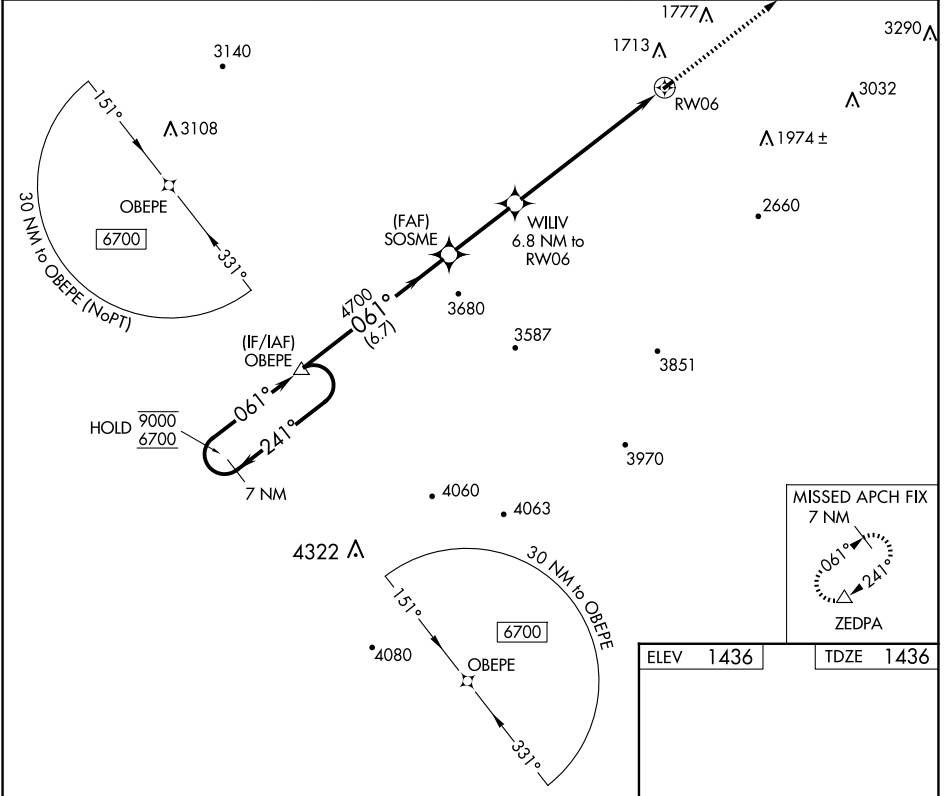
RNP APCH.  
 NA Rwy 6 helicopter visibility reduction below 1 SM NA. Procedure NA at night.

MISSED APPROACH: Climb to 6300 direct ZEDPA and hold, continue climb-in-hold to 6300.

AWOS-3PT  
**118.625**

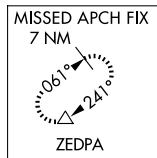
POTOMAC APP CON  
**132.85 323.125**

UNICOM  
**123.05 (CTAF) 0**

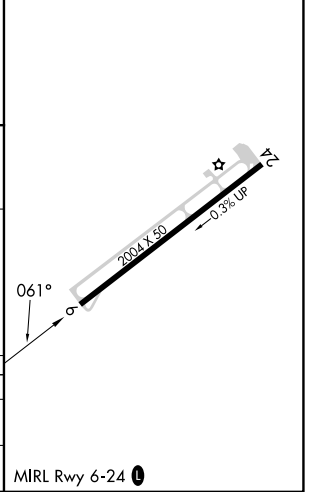
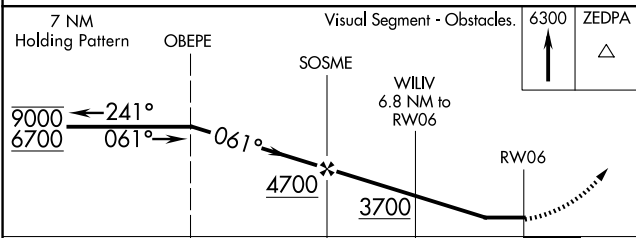


NE-3, 23 JAN 2025 to 20 FEB 2025

NE-3, 23 JAN 2025 to 20 FEB 2025



ELEV **1436** TDZE **1436**



CATEGORY	A	B	C	D
LNVA MDA	2440-3	1004 (1100-3)	NA	
CIRCLING	2440-3	1004 (1100-3)	NA	