

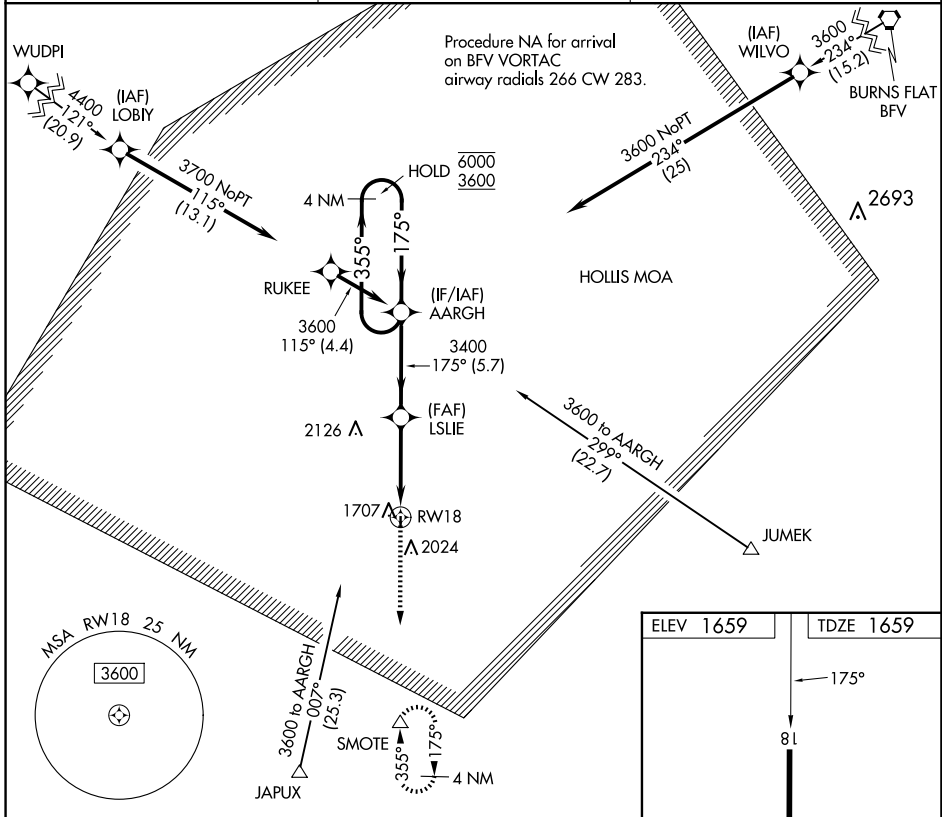
APP CRS	Rwy Idg	3000
175°	TDZE	1659
	Apt Elev	1659

RNAV (GPS) RWY 18

HOLLIS MUNI (O35)

RNP APCH.	<p>▼ Rwy 18 helicopter visibility reduction below 1 SM NA. ▲ Straight-in Rwy 18 and Circling Rwy 18 NA at night. Use Altus/Quartz Mountain Rgnl altimeter setting.</p>	<p>MISSED APPROACH: Climb to 3700 direct SMOTE and hold.</p>

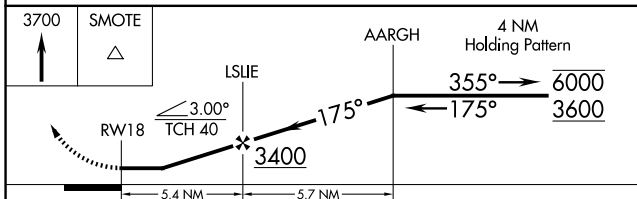
AXS AWOS-3PT 118.825	ALTUS APP CON * 125.1 353.7	CTAF 122.9
--------------------------------	---------------------------------------	----------------------



SC-1, 23 JAN 2025 to 20 FEB 2025

SC-1, 23 JAN 2025 to 20 FEB 2025

ELEV 1659	TDZE 1659
<p>MIRL Rwy 18-36</p>	



CATEGORY	A	B	C	D
LNVA MDA	2400-1 741 (800-1)	2400-1¼ 741 (800-1¼)	NA	
CIRCLING	2400-1 741 (800-1)	2480-1¼ 821 (900-1¼)	NA	