

# RNAV GPS RWY 36

[USA] BRYANT AAF (FORT RICHARDSON) (FRN) (PAFR)

APCH CRS	Rwy ldg	3418
010°	TDZE	382
	Arprt Elev	387

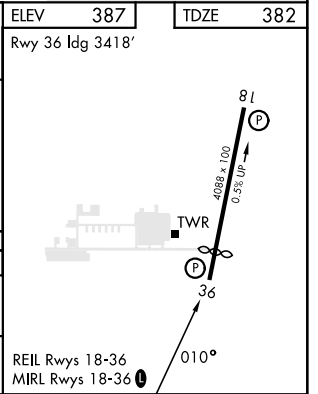
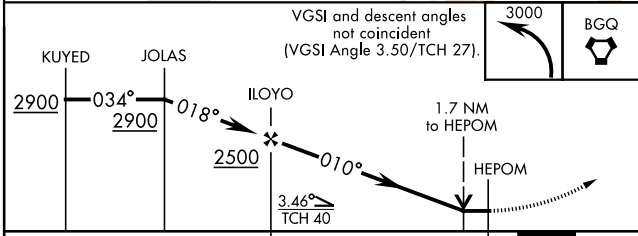
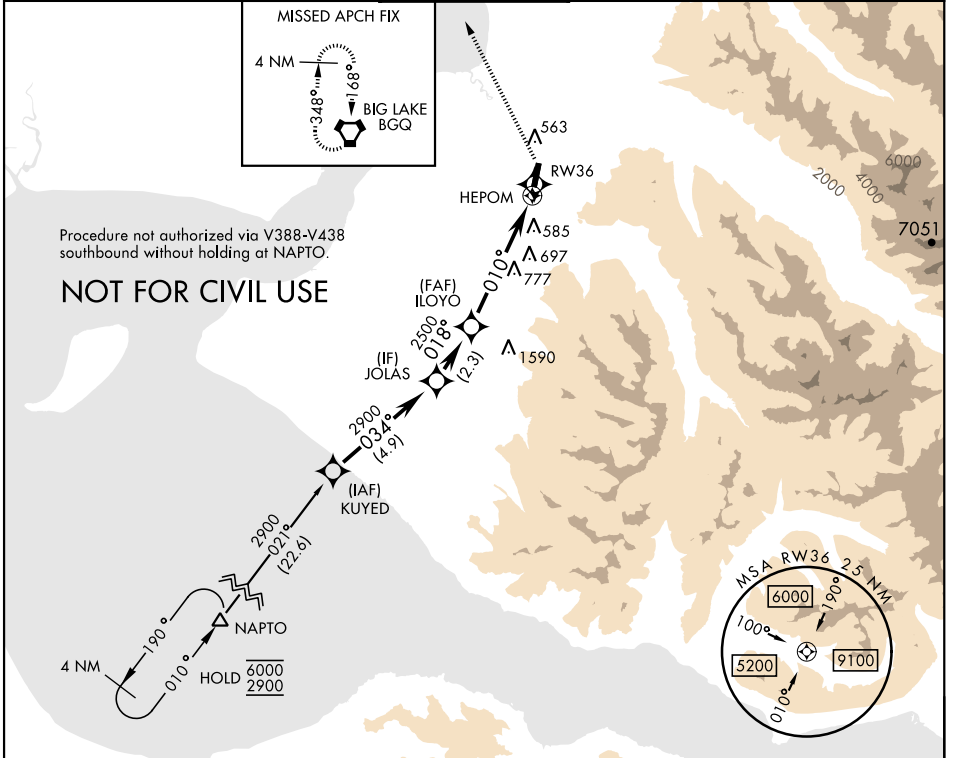
RNP APCH - GPS

▼ Rwy 36 helicopter visibility reduction below 3/4 mile not authorized.

\* Circling not authorized E of Rwy 18-36.

MISSED APPROACH: Climbing left turn to 3000 proceed direct BGQ VORTAC and hold.

AWOS-3	ANCHORAGE APP CON	TOWER ★	GND CON	CLNC DEL
134.25	118.6 290.5	125.0 (CTAF) 0254.35	121.25 239.25	119.1 363.2



CATEGORY	A	B	C	D
LNVA MDA	1220-1 838 (900-1)	1220-1¼ 838 (900-1¼)	1220-2½ 838 (900-2½)	
CIRCLING *	1220-1¼ 833 (900-1¼)		1220-2½ 833 (900-2½)	1620-3 1233 (1300-3)

FORT RICHARDSON (ANCHORAGE), ALASKA 61° 16'N - 149° 39'E BRYANT AAF (FORT RICHARDSON) (FRN) (PAFR)  
 Orig 31OCT24

# RNAV GPS RWY 36

AK, 26 DEC 2024 to 20 FEB 2025

AK, 26 DEC 2024 to 20 FEB 2025