

WAAS CH <b>45936</b> <b>W32A</b>	APP CRS <b>324°</b>	Rwy Idg <b>3600</b> TDZE <b>1600</b> Apt Elev <b>1604</b>
----------------------------------------	------------------------	--------------------------------------------------------------------------

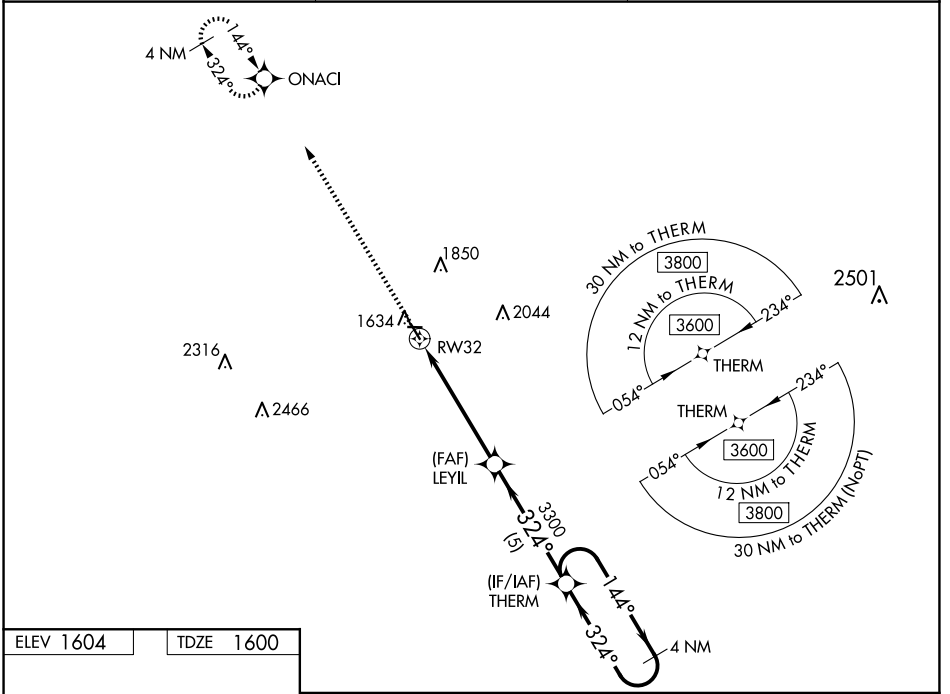
# RNAV (GPS) RWY 32

EDGELEY MUNI (51D)

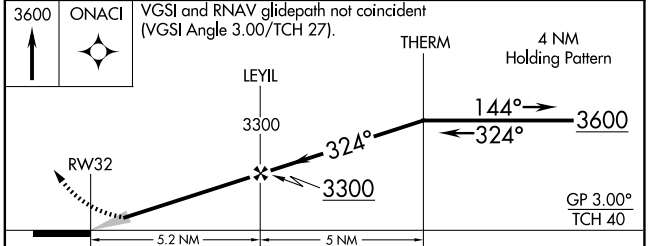
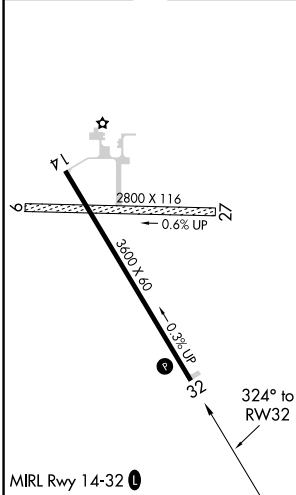
**Baro-VNAV NA.** Use Jamestown altimeter setting; when not received, use Oakes altimeter setting and increase all DA 10 feet and all MDA 20 feet; increase LNAV/VNAV all Cats visibility 1/8 mile. DME/DME RNP-0.3 NA. Procedure NA at night. Circling NA to Rwy 9 and 27.

**MISSED APPROACH:** Climb to 3600 direct ONACI and hold.

JMS ASOS <b>118.425</b>	MINNEAPOLIS CENTER <b>124.2 270.3</b>	UNICOM <b>122.8 (CTAF)</b>
----------------------------	------------------------------------------	-------------------------------



ELEV 1604	TDZE 1600
-----------	-----------



CATEGORY	A	B	C	D
LPV DA	1895-1	295 (300-1)		NA
LNAV/VNAV DA	1945-1 1/8	345 (400-1 1/8)		NA
LNAV MDA	2140-1	540 (600-1)		NA
<b>C</b> CIRCLING	2140-1 536 (600-1)	2160-1 556 (600-1)		NA

NC-1, 23 JAN 2025 to 20 FEB 2025

NC-1, 23 JAN 2025 to 20 FEB 2025